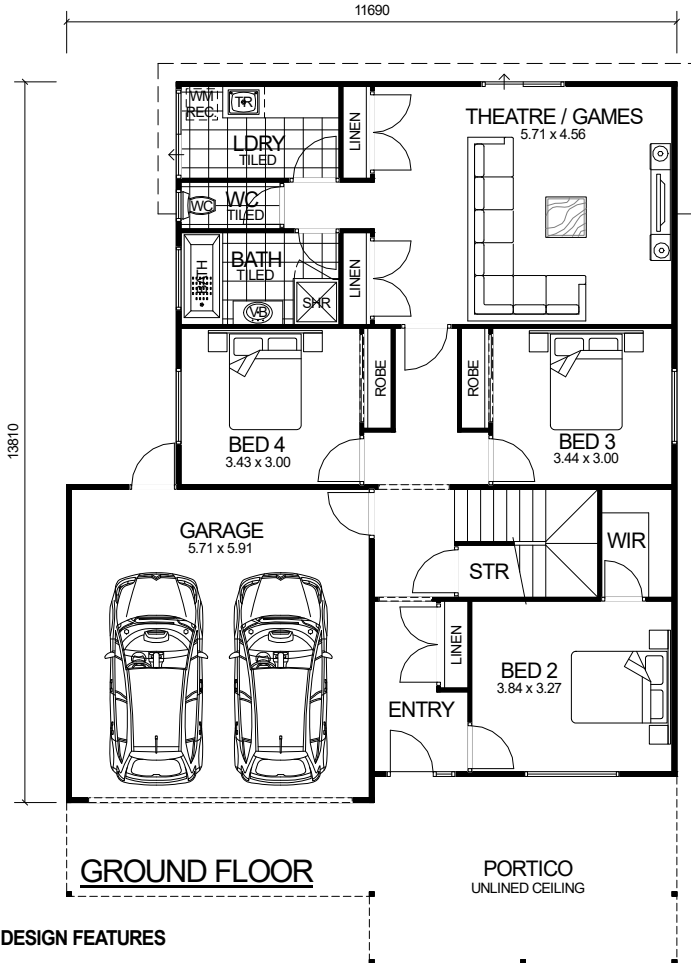


# TWO STOREY SERIES



## DESIGN FEATURES

- SMART GLASS INCLUDED TO ALL ALUMINIUM WINDOWS AND DOORS IN CLIMATE ZONES 4 & 5.
- LARGE MODERN KITCHEN WITH BREAKFAST BAR, WALK-IN PANTRY AND STAINLESS STEEL APPLIANCES.
- SEPARATE POWDER ROOM WITH VANITY BASIN.
- LARGE FEATURE SHOWER & FREE STANDING BATH WITH HIS & HERS VANITY BASINS TO ENSUITE.
- GLASS HIGHLIGHT WINDOWS TO FRONT OPEN GABLE.
- LARGE ALFRESCO BALCONY DECKS TO UPPER FLOOR INCLUDED.
- HIGH RAKING CEILING TO KITCHEN, MEALS AND LIVING.
- HIGH RAKING CEILING TO ALFRESCO BALCONY WITH OPEN GABLE.
- NARROW BLOCK COMPATIBLE.
- 2.7m LOWER CEILING HEIGHT.
- 2.4m UPPER CEILING HEIGHT.

**OVERALL SIZE:**  
Width 11.69m  
Length 16.91m

**4 BEDROOM x 2.5 BATHROOM  
PLUS THEATRE/GAMES & STUDY**

**"EDGE 4 x 2.5"**

TOTAL HOME FRAMES © COPYRIGHT

**NARROW BLOCK  
COMPATIBLE**

## AREA

GROUND FLOOR:	107.29m <sup>2</sup>
UPPER FLOOR:	120.96m <sup>2</sup>
GARAGE:	35.03m <sup>2</sup>
PORTICO:	31.60m <sup>2</sup>
ALFRESCO BALCONY:	28.70m <sup>2</sup>
<b>TOTAL:</b>	<b>323.58m<sup>2</sup></b>