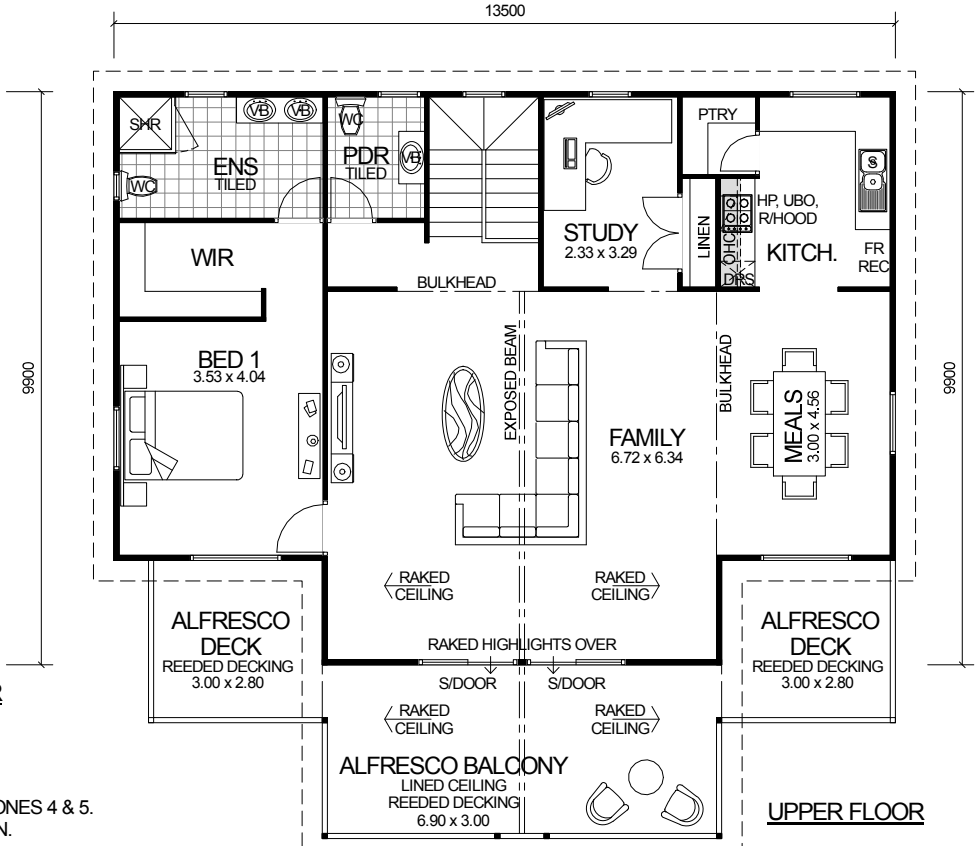
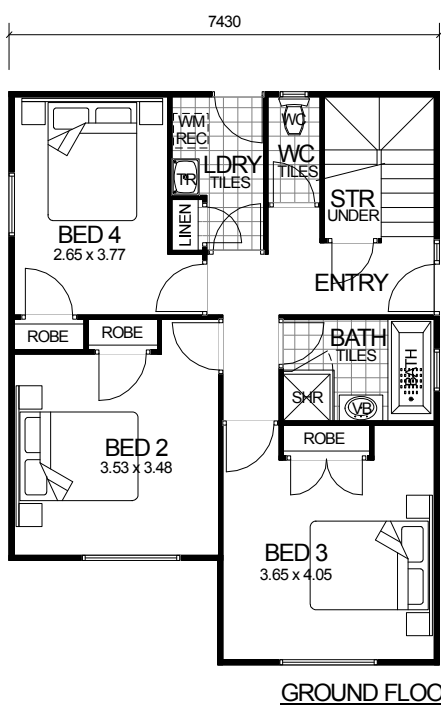


TWO STOREY SERIES



DESIGN FEATURES

- SMART GLASS TO ALL ALUMINIUM WINDOWS AND DOORS IN CLIMATE ZONES 4 & 5.
- CEILING FANS TO FIRST FLOOR IN CLIMATE ZONES 4 & 5.
- SEPARATE POWDER ROOM WITH VANITY BASIN.
- HIS & HERS VANITY BASINS TO ENSUITE.
- GLASS HIGHLIGHT WINDOWS TO FRONT OPEN GABLE.
- LARGE ALFRESCO DECKS TO UPPER FLOOR INCLUDED.
- HIGH RAKING CEILINGS TO FAMILY INCLUDING LINED RAFTERS AND EXPOSED BEAM.
- HIGH RAKING LINED CEILING TO ALFRESCO BALCONY WITH OPEN GABLE.
- 2.4m UPPER AND LOWER CEILING HEIGHT.

OVERALL SIZE:
Width 13.50m
Length 12.90m

4 BEDROOM x 2.5 BATHROOM PLUS STUDY

"RIDGEVIEW"

TOTAL HOME FRAMES © COPYRIGHT

AREA	
GROUND FLOOR:	67.08m ²
UPPER FLOOR:	121.77m ²
ALFRESCO BALCONY:	20.70m ²
ALFRESCO DECK:	16.80m ²
TOTAL:	226.35m²