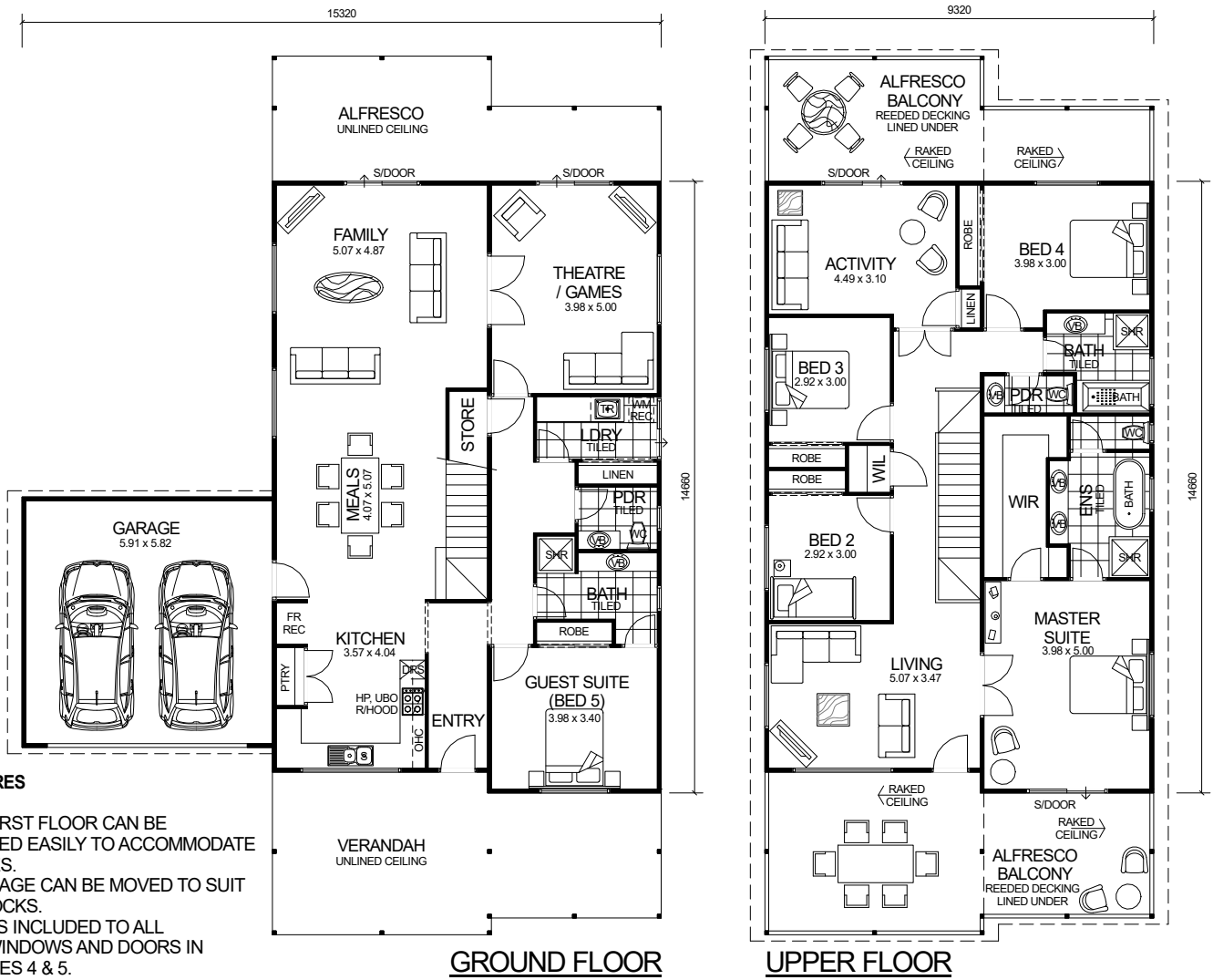


TWO STOREY SERIES



DESIGN FEATURES

- GROUND & FIRST FLOOR CAN BE INTERCHANGED EASILY TO ACCOMMODATE LIVING STYLES.
- DOUBLE GARAGE CAN BE MOVED TO SUIT NARROW BLOCKS.
- SMART GLASS INCLUDED TO ALL ALUMINIUM WINDOWS AND DOORS IN CLIMATE ZONES 4 & 5.
- LARGE MODERN KITCHEN WITH DOUBLE PANTRY AND STAINLESS STEEL APPLIANCES.
- TWO SEPARATE POWDER ROOMS WITH VANITY BASIN TO GROUND & UPPER FLOORS.
- HIS AND HERS VANITY BASINS WITH LARGE FEATURE BATH.
- ARCHITECTURALLY DESIGNED MODERN FRONT ELEVATION.
- LARGE ALFRESCO BALCONY DECKS TO UPPER FLOOR INCLUDED TO FRONT & REAR OF HOME.
- HIGH RAKING LINED CEILINGS TO ALFRESCO BALCONIES WITH OPEN GABLE TO FRONT & REAR OF HOME.
- FEATURE STAIRS INCLUDED.
- NARROW BLOCK COMPATIBLE.
- 2.7m GROUND FLOOR CEILING HEIGHT.
- 2.4m UPPER FLOOR CEILING HEIGHT.

OVERALL SIZE:
Width 15.32m
Length 14.66m

**5 BEDROOM x 3 BATHROOM
PLUS THEATRE / GAMES & ACTIVITY**

"ULTIMATE 5 x 2.5"

TOTAL HOME FRAMES © COPYRIGHT

**NARROW BLOCK
COMPATIBLE**

AREA

GROUND FLOOR:	134.05m ²
UPPER FLOOR:	134.05m ²
GARAGE:	36.00m ²
FRONT VERANDAH:	32.64m ²
REAR VERANDAH:	23.08m ²
FRONT BALCONY:	32.64m ²
REAR BALCONY:	23.08m ²
TOTAL:	415.54m²