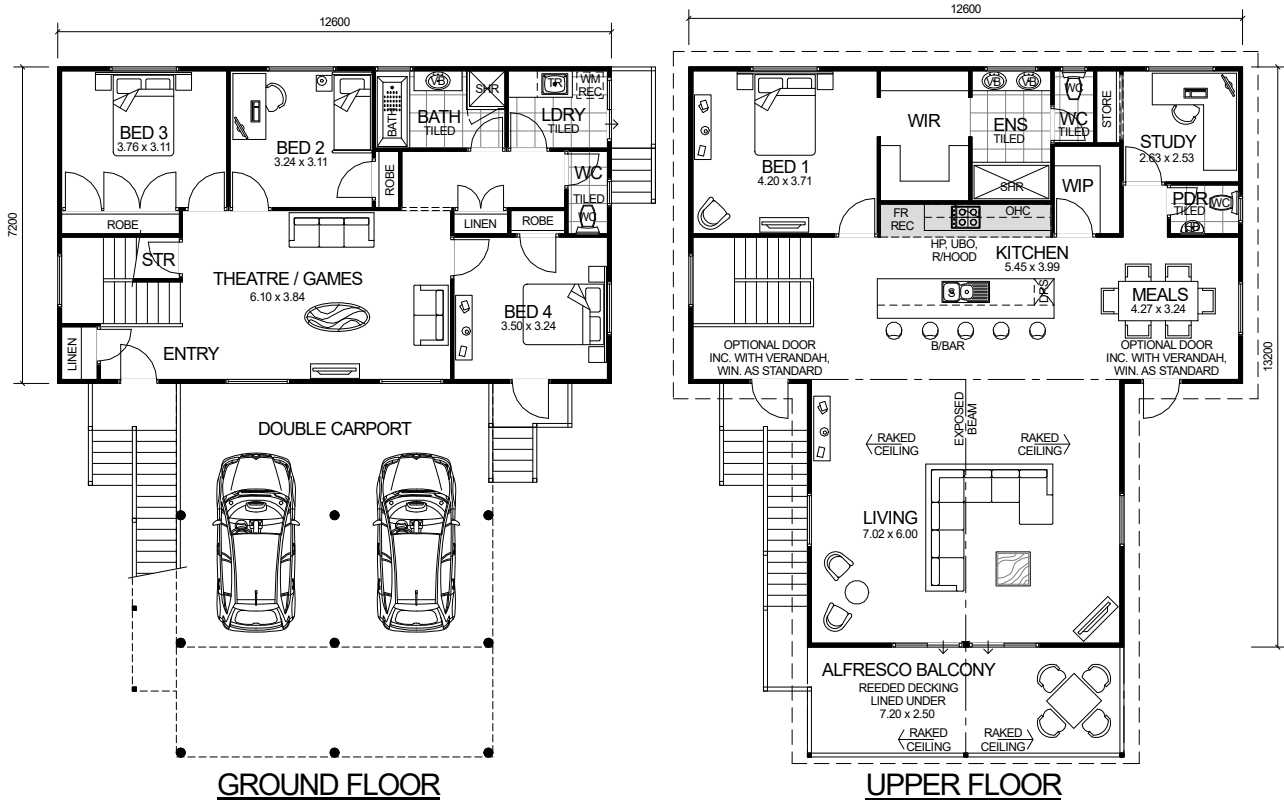


# TWO STOREY SERIES



## DESIGN FEATURES

- SMART GLASS INCLUDED TO ALL ALUMINIUM WINDOWS AND DOORS IN CLIMATE ZONES 4 & 5.
- LARGE MODERN GALLEY KITCHEN WITH BREAKFAST BAR, WALK-IN PANTRY AND STAINLESS STEEL APPLIANCES.
- SEPARATE POWDER ROOM WITH VANITY BASIN.
- HIS AND HERS VANITY BASINS WITH LARGE FEATURE SHOWER TO ENSUITE.
- GLASS HIGHLIGHT WINDOWS TO FRONT OPEN GABLE.
- LARGE ALFRESCO BALCONY DECKS TO UPPER FLOOR INCLUDED.
- HIGH RAKING CEILINGS TO LIVING INCLUDING LINED RAFTERS AND EXPOSED BEAM.
- HIGH RAKING LINED CEILING TO ALFRESCO BALCONY WITH OPEN GABLE.
- FEATURE STAIRS INCLUDED.
- NARROW BLOCK COMPATIBLE.
- DOWNSTAIRS DOUBLE CARPORT INCLUDED AND CAN BE ENCLOSED TO BECOME A GARAGE ON REQUEST.
- OPTIONAL TWO FRONT ELEVATION CHOICES - ASK YOUR REPRESENTATIVE.
- 2.4m UPPER AND LOWER CEILING HEIGHT.

4 BEDROOM x 2.5 BATHROOM  
PLUS THEATRE/GAMES & STUDY

## "VISION EXPANSE"

TOTAL HOME FRAMES © COPYRIGHT

NARROW BLOCK  
COMPATIBLE

### AREA

GROUND FLOOR:	90.72m <sup>2</sup>
UPPER FLOOR:	133.92m <sup>2</sup>
ALFRESCO BALCONY:	18.00m <sup>2</sup>
<b>TOTAL:</b>	<b>242.64m<sup>2</sup></b>

OVERALL SIZE:  
Width 12.60m  
Length 15.70m

