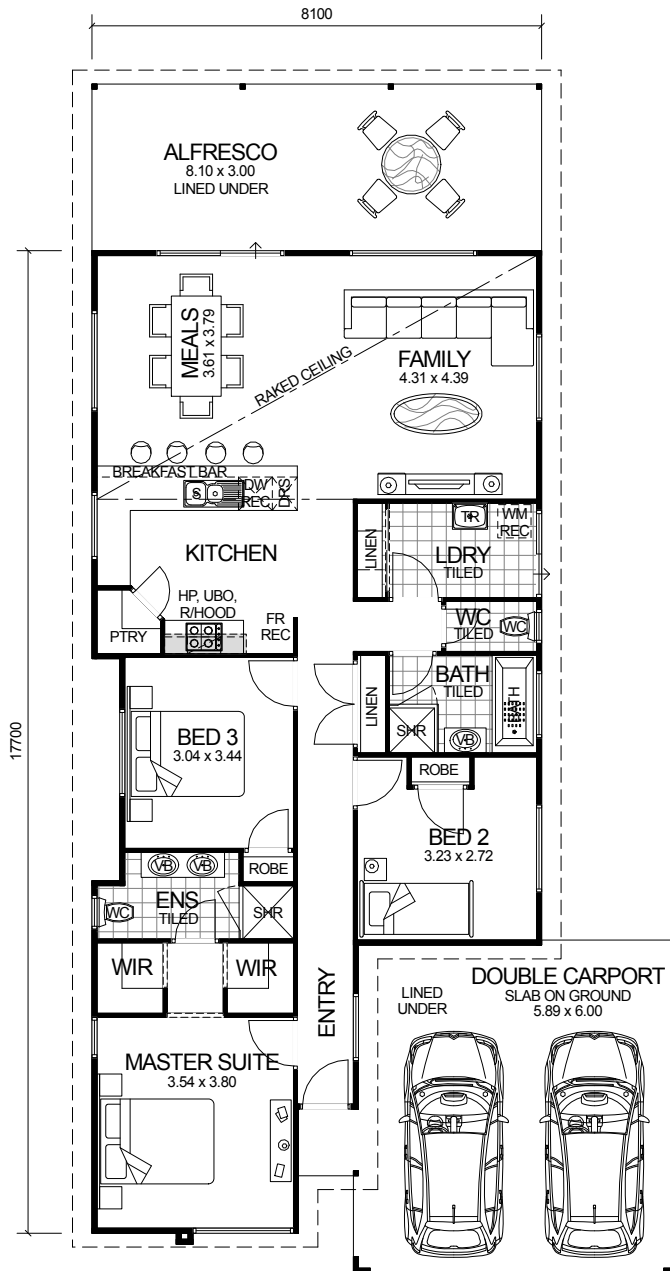
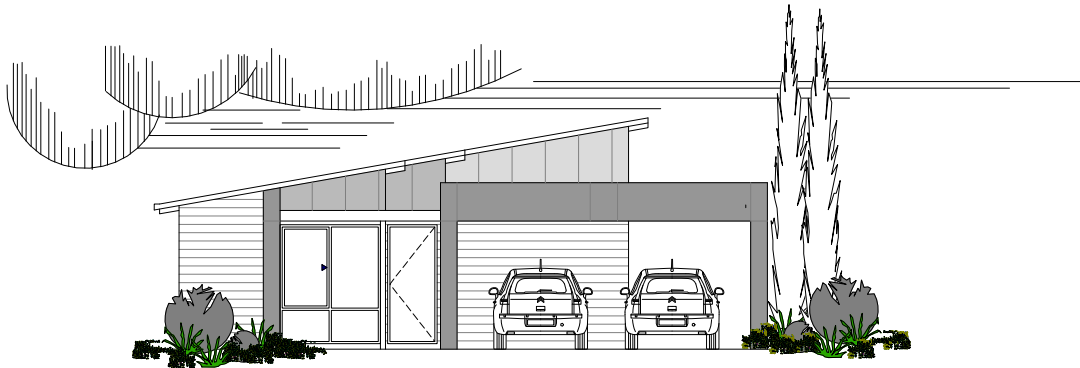


# CITY SERIES



**NARROW BLOCK  
COMPATIBLE**

**OVERALL SIZE:**  
Width 10.60m  
Length 21.42m

## DESIGN FEATURES

- ARCHITECTURALLY DESIGNED WITH JAMES HARDIE SCYON CLADDING TO FRONT ELEVATION AND MODERN ROOF.
- SMART GLASS TO ALL ALUMINIUM WINDOWS AND DOORS IN CLIMATE ZONES 4 & 5.
- 2.4m CEILING HEIGHT.
- LARGE DOUBLE GARAGE JOINED TO MAIN HOME WITH LINED CEILING.
- LARGE FEATURE ALFRESCO OFF FAMILY TO REAR OF HOME WITH LINED CEILING.
- LARGE KITCHEN WITH WALK IN PANTRY AND STAINLESS STEEL APPLIANCES.
- DISHWASHER RECESS AND BREAKFAST BAR INCLUDED TO KITCHEN.
- HIS & HERS VANITY BASINS TO ENSUITE.
- HIS & HERS WALK IN ROBES.
- SLIDING DOORS TO LINEN PRESS IN LAUNDRY.
- HIGHER RAKED CEILING TO FAMILY AND MEALS AREA.

3 BEDROOM x 2 BATHROOM

## "THE GALAXY"

TOTAL HOME FRAMES © COPYRIGHT

AREA	
HOUSE:	134.79m <sup>2</sup>
ALFRESCO:	11.34m <sup>2</sup>
CARPOT:	35.96m <sup>2</sup>
<b>TOTAL:</b>	<b>182.09m<sup>2</sup></b>