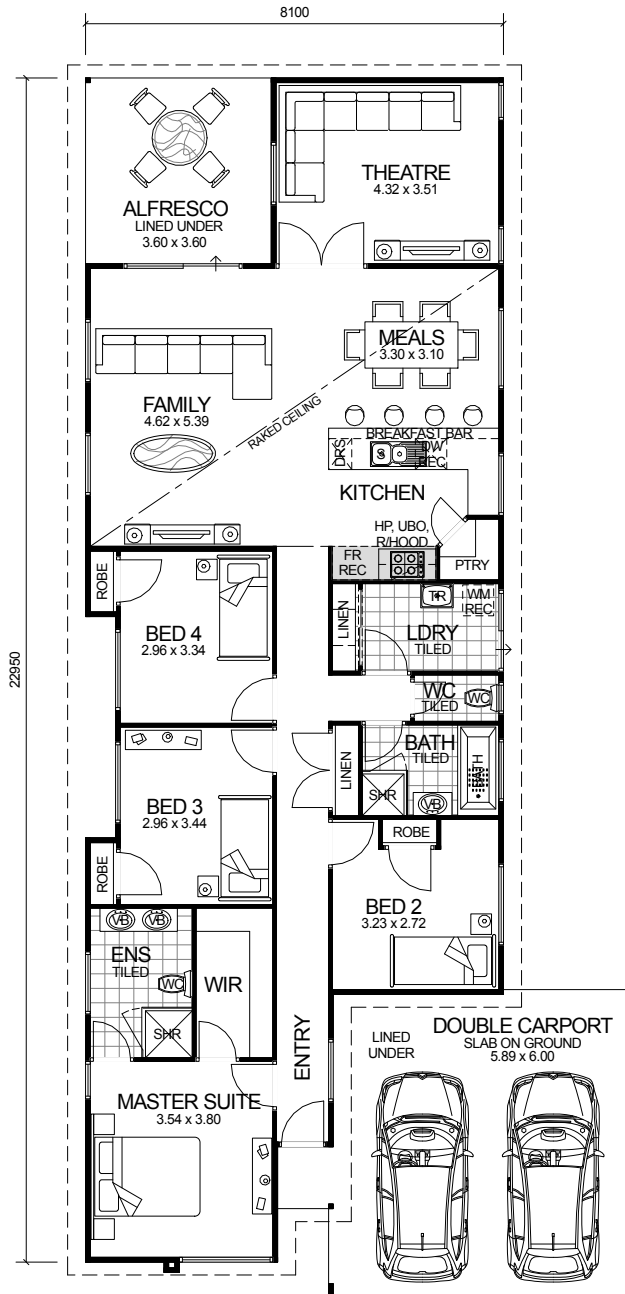
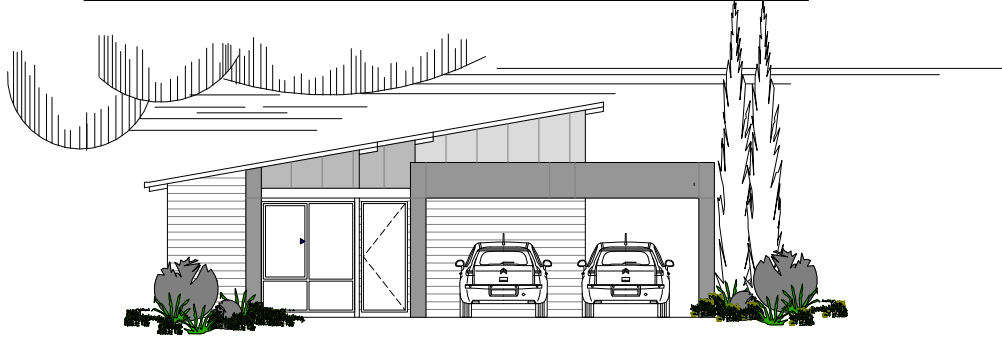


CITY SERIES



**NARROW BLOCK
COMPATIBLE**

OVERALL SIZE:
Width 10.60m
Length 23.67m

DESIGN FEATURES

- ARCHITECTURALLY DESIGNED WITH JAMES HARDIE SCYON CLADDING TO FRONT ELEVATION AND MODERN ROOF.
- SMART GLASS TO ALL ALUMINIUM WINDOWS AND DOORS IN CLIMATE ZONES 4 & 5.
- 2.4m CEILING HEIGHT.
- LARGE DOUBLE GARAGE JOINED TO MAIN HOME WITH LINED CEILING.
- LARGE FEATURE ALFRESCO OFF FAMILY TO REAR OF HOME WITH LINED CEILING.
- LARGE KITCHEN WITH WALK IN PANTRY AND STAINLESS STEEL APPLIANCES.
- DISHWASHER RECESS AND BREAKFAST BAR INCLUDED TO KITCHEN.
- HIS & HERS VANITY BASINS TO ENSUITE.
- SLIDING DOORS TO LINEN PRESS IN LAUNDRY.
- HIGHER RAKED CEILING TO KITCHEN, FAMILY, AND MEALS AREA.
- THEATRE ROOM.

4 BEDROOM x 2 BATHROOM

"THE GALAXY"

TOTAL HOME FRAMES © COPYRIGHT

AREA	
HOUSE:	150.91m ²
ALFRESCO:	12.96m ²
CARPORT:	35.96m ²
TOTAL:	199.83m²