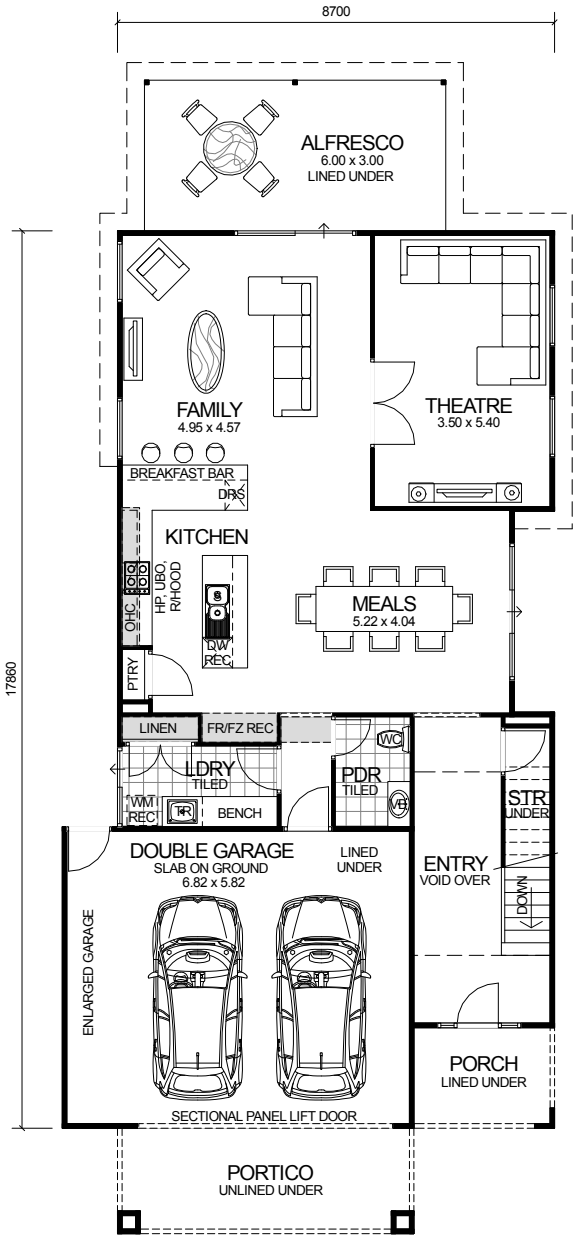
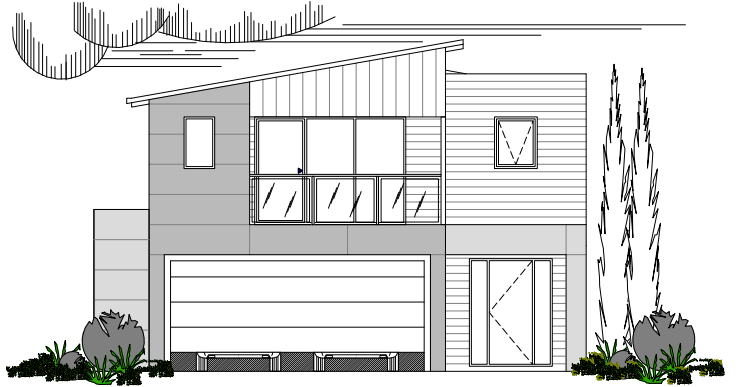
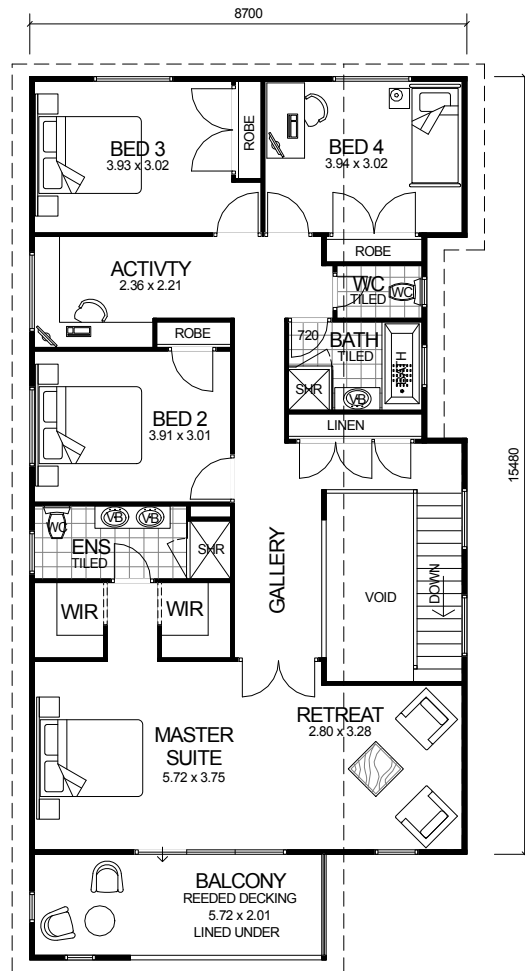


CITY SERIES



GROUND FLOOR



UPPER FLOOR

DESIGN FEATURES

- ARCHITECTURALLY DESIGNED WITH JAMES HARDIE SCYON CLADDING TO FRONT ELEVATION AND MODERN ROOF.
- SMART GLASS TO ALL ALUMINIUM WINDOWS AND DOORS IN CLIMATE ZONES 4 & 5.
- 2.4m CEILING HEIGHT.
- LARGE DOUBLE GARAGE JOINED TO MAIN HOME WITH LINED CEILING AND MODERN LOOK DOUBLE SECTIONAL DOOR.
- LARGE FEATURE ALFRESCO OFF FAMILY ROOM TO REAR OF HOME WITH LINED CEILING.
- LARGE KITCHEN WITH STAINLESS STEEL APPLIANCES.
- DISHWASHER RECESS AND BREAKFAST BAR INCLUDED TO KITCHEN.
- HIS & HERS WALK IN ROBES.
- HIS & HERS VANITY BASINS TO ENSUITE.
- SEPARATE POWDER ROOM
- THEATRE ROOM.
- POWERCOATED ALUMINIUM BALUSTRADE WITH GLASS INFILL PANELS TO UPPER FLOOR.

4 BEDROOM x 2.5 BATHROOM

"THE METROPOLITAN"

TOTAL HOME FRAMES © COPYRIGHT

NARROW BLOCK COMPATIBLE

OVERALL SIZE:
Width 9.80m
Length 22.96m

AREA	
GROUND FLOOR:	111.18m ²
UPPER FLOOR:	131.48m ²
ALFRESCO:	18.00m ²
GARAGE:	42.00m ²
PORCH:	5.60m ²
PORTICO:	12.39m ²
BALCONY:	12.39m ²
TOTAL:	333.04m²