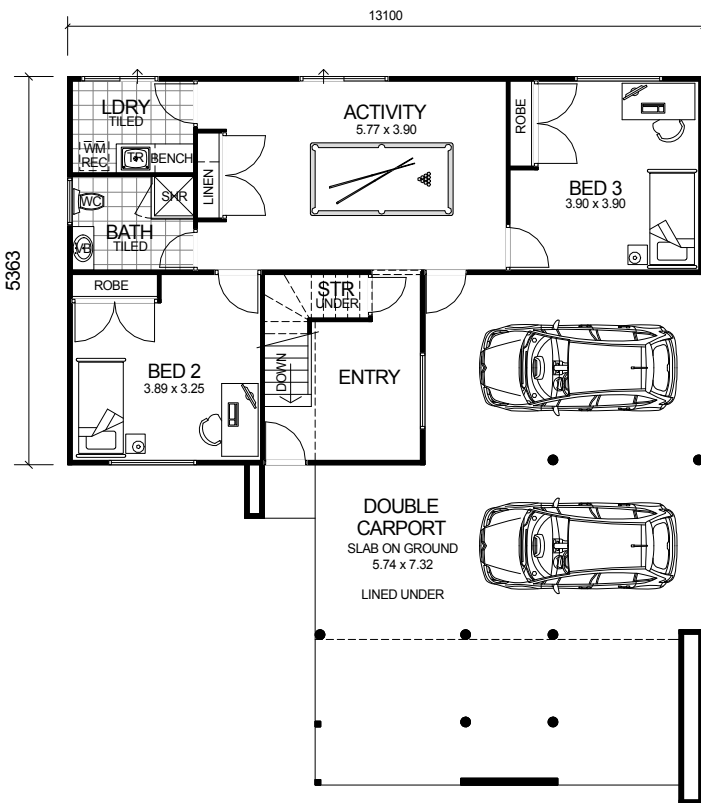
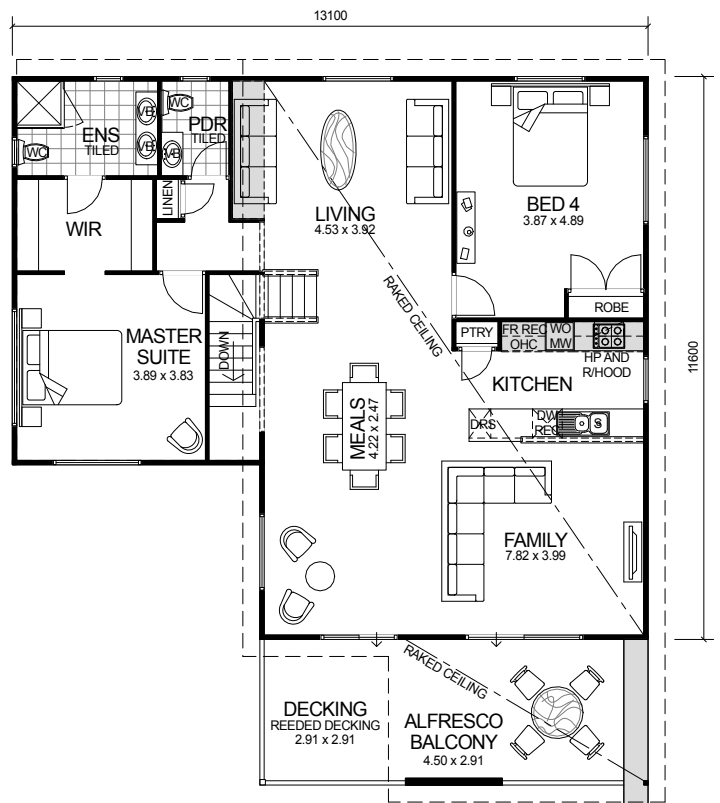


# CITY SERIES



**GROUND FLOOR**



**UPPER FLOOR**

**DESIGN FEATURES**

- ARCHITECTURALLY DESIGNED WITH JAMES HARDIE SCYON CLADDING TO FRONT ELEVATION AND MODERN ROOF.
- SMART GLASS TO ALL ALUMINIUM WINDOWS AND DOORS IN CLIMATE ZONES 4 & 5.
- 2.4m CEILING HEIGHT.
- LARGE DOUBLE CARPORT JOINED TO MAIN HOME WITH LINED CEILING.
- LARGE FEATURE ALFRESCO BALCONY WITH RAKED CEILING.
- LARGE KITCHEN WITH STAINLESS STEEL APPLIANCES.
- DISHWASHER RECESS INCLUDED TO KITCHEN.
- HIS & HERS WALK IN ROBES.
- HIS & HERS VANITY BASINS TO ENSUITE.
- HIGHER RAKED CEILING TO FAMILY, MEALS, LIVING, AND KITCHEN.
- SEPARATE POWDER ROOM.
- LARGE ACTIVITY ROOM.
- POWERCOATED ALUMINIUM BALUSTRADE WITH GLASS INFILL PANELS TO UPPER FLOOR.

4 BEDROOM x 2.5 BATHROOM

## "THE STATUS"

TOTAL HOME FRAMES © COPYRIGHT

|                      |        |
|----------------------|--------|
| <b>OVERALL SIZE:</b> |        |
| Width                | 13.10m |
| Length               | 15.00m |

|               |                            |
|---------------|----------------------------|
| <b>AREA</b>   |                            |
| GROUND FLOOR: | 82.30m <sup>2</sup>        |
| UPPER FLOOR:  | 133.60m <sup>2</sup>       |
| BALCONY:      | 15.00m <sup>2</sup>        |
| DECKING:      | 9.00m <sup>2</sup>         |
| <b>TOTAL:</b> | <b>239.90m<sup>2</sup></b> |