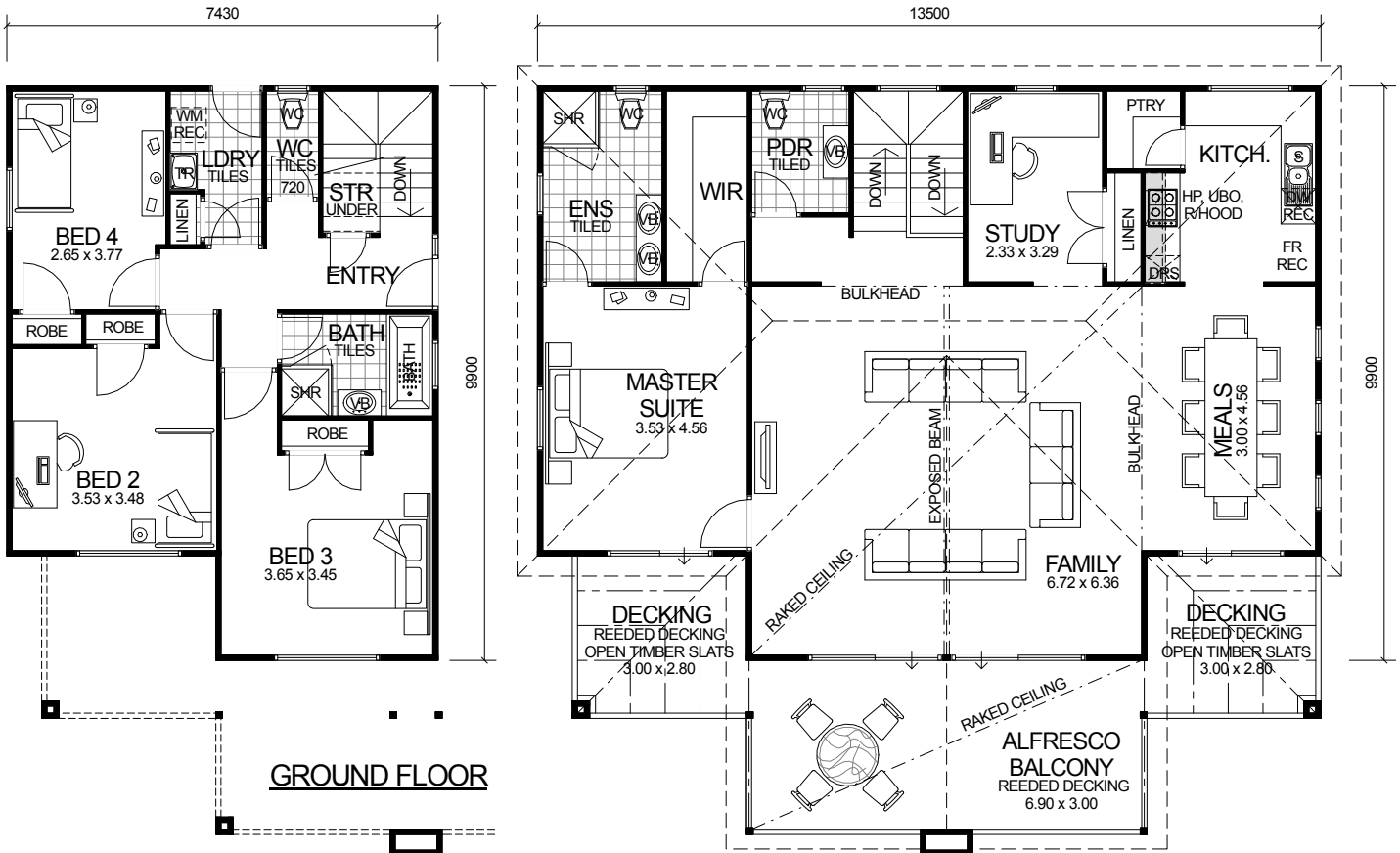


CITY SERIES



DESIGN FEATURES

- ARCHITECTURALLY DESIGNED WITH JAMES HARDIE SCYON CLADDING TO FRONT ELEVATION AND MODERN ROOF.
- SMART GLASS TO ALL ALUMINIUM WINDOWS AND DOORS IN CLIMATE ZONES 4 & 5.
- 2.4m CEILING HEIGHT.
- LARGE DOUBLE CARPORT JOINED TO MAIN HOME WITH LINED CEILING.
- LARGE FEATURE ALFRESCO BALCONY WITH RAKED CEILING.
- LARGE KITCHEN WITH WALK IN PANTRY AND STAINLESS STEEL APPLIANCES.
- DISHWASHER RECESS INCLUDED TO KITCHEN.
- HIS & HERS VANITY BASINS TO ENSUITE.
- HIGHER RAKED CEILING TO FAMILY AREA.
- SEPARATE POWDER ROOM.
- POWERCOATED ALUMINIUM BALUSTRADE WITH GLASS INFILL PANELS TO UPPER FLOOR.

UPPER FLOOR

4 BEDROOM x 2.5 BATHROOM

"THE STELLAR"

TOTAL HOME FRAMES © COPYRIGHT

OVERALL SIZE:	
Width	13.50m
Length	13.21m

AREA	
GROUND FLOOR:	67.08m ²
UPPER FLOOR:	121.77m ²
BALCONY:	20.70m ²
DECKING:	16.80m ²
TOTAL:	226.35m²