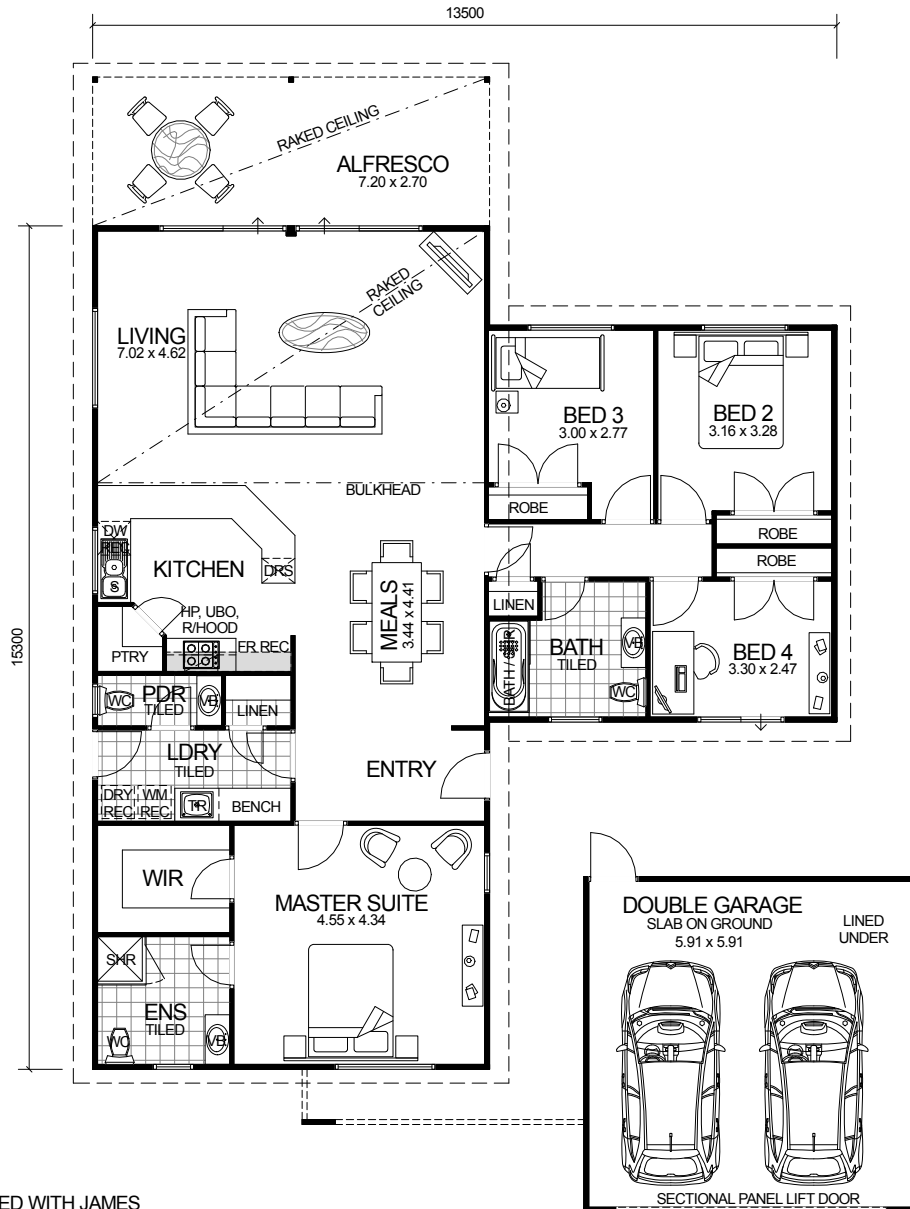
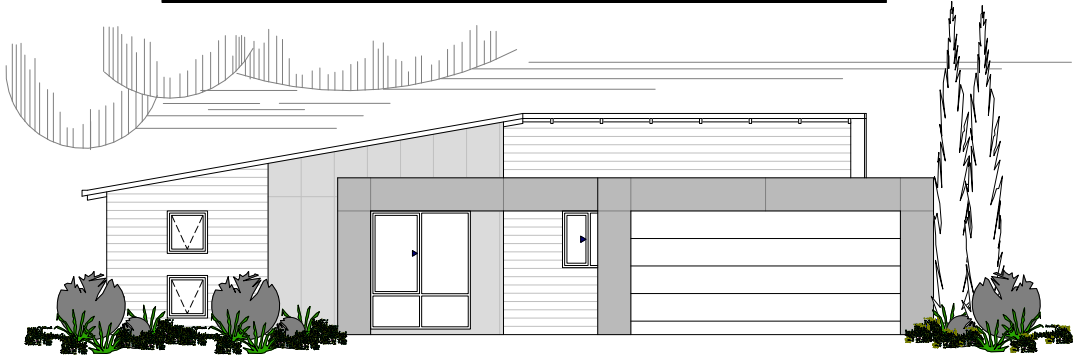


# CITY SERIES



## DESIGN FEATURES

- ARCHITECTURALLY DESIGNED WITH JAMES HARDIE SCYON CLADDING TO FRONT ELEVATION AND MODERN ROOF.
- SMART GLASS TO ALL ALUMINIUM WINDOWS AND DOORS IN CLIMATE ZONES 4 & 5.
- 2.4m CEILING HEIGHT.
- LARGE DOUBLE GARAGE JOINED TO MAIN HOME WITH LINED CEILING AND MODERN LOOK DOUBLE SECTIONAL DOOR.
- LARGE FEATURE ALFRESCO WITH RAKED CEILING.
- LARGE KITCHEN WITH WALK IN PANTRY AND STAINLESS STEEL APPLIANCES.
- DISHWASHER RECESS INCLUDED TO KITCHEN.
- HIGHER RAKED CEILING TO LIVING AREA.
- SEPARATE POWDER ROOM.

4 BEDROOM x 2.5 BATHROOM

## "THE STYLUS"

TOTAL HOME FRAMES © COPYRIGHT

OVERALL SIZE:  
Width 15.00m  
Length 20.59m

### AREA

HOUSE:	155.52m <sup>2</sup>
GARAGE:	37.09m <sup>2</sup>
ALFRESCO:	19.44m <sup>2</sup>
<b>TOTAL:</b>	<b>212.05m<sup>2</sup></b>