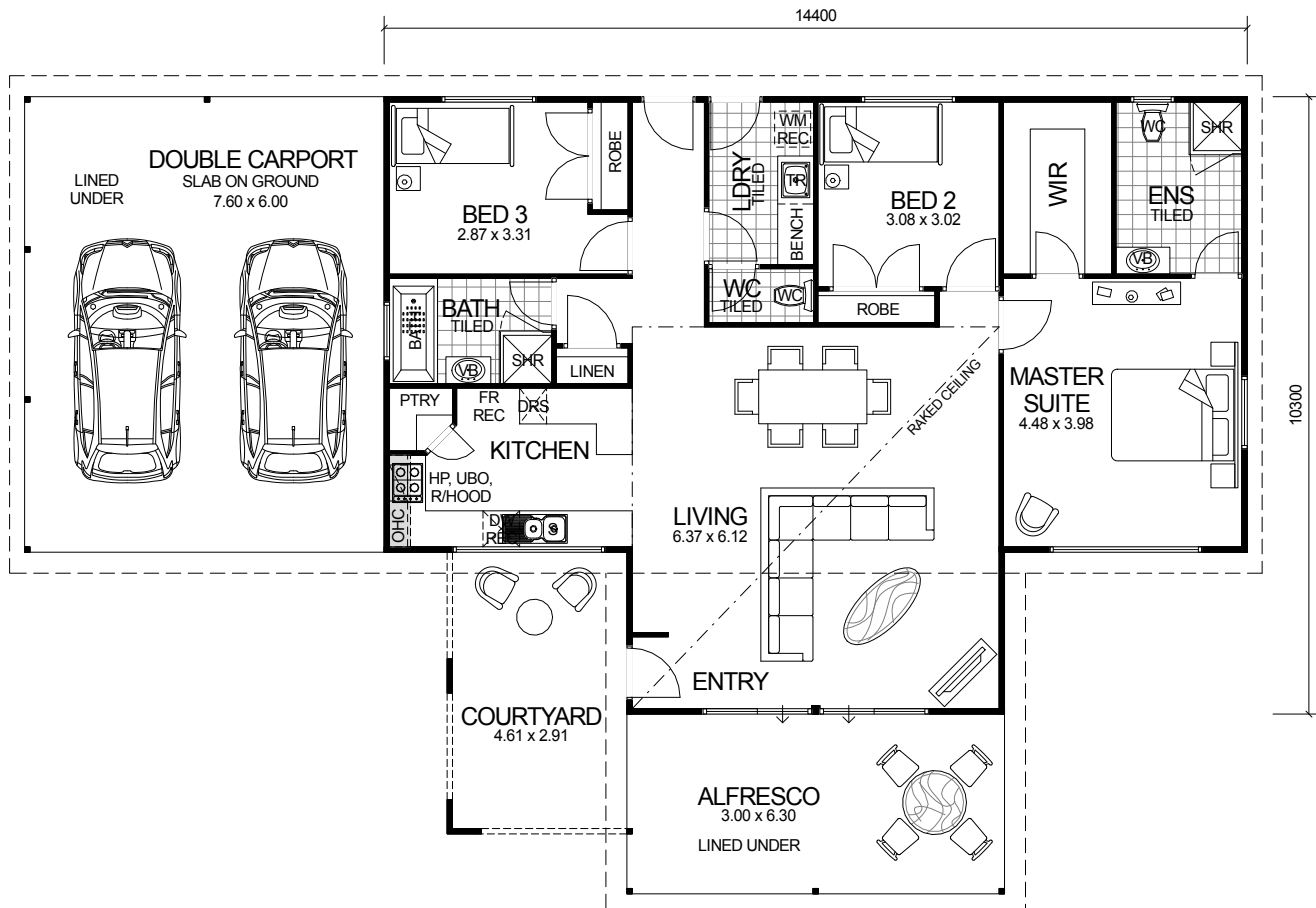


CITY SERIES



DESIGN FEATURES

- ARCHITECTURALLY DESIGNED WITH JAMES HARDIE SCYON CLADDING TO FRONT ELEVATION AND MODERN ROOF..
- SMART GLASS TO ALL ALUMINIUM WINDOWS AND DOORS IN CLIMATE ZONES 4 & 5.
- 2.4m CEILING HEIGHT.
- LARGE DOUBLE CARPORT JOINED TO MAIN HOME WITH LINED CEILING.
- LARGE FEATURE ALFRESCO WITH LINED CEILING.
- LARGE KITCHEN WITH WALK IN PANTRY AND STAINLESS STEEL APPLIANCES.
- DISHWASHER RECESS INCLUDED TO KITCHEN.
- HIGHER RAKED CEILING TO LIVING AREA.

3 BEDROOM x 2 BATHROOM

"THE UNIQUE"

TOTAL HOME FRAMES © COPYRIGHT

OVERALL SIZE:
Width 20.40m
Length 13.30m

AREA

HOUSE:	126.45m ²
ALFRESCO:	18.90m ²
COURTYARD:	14.10m ²
CARPORT:	45.60m ²
TOTAL:	205.05m²