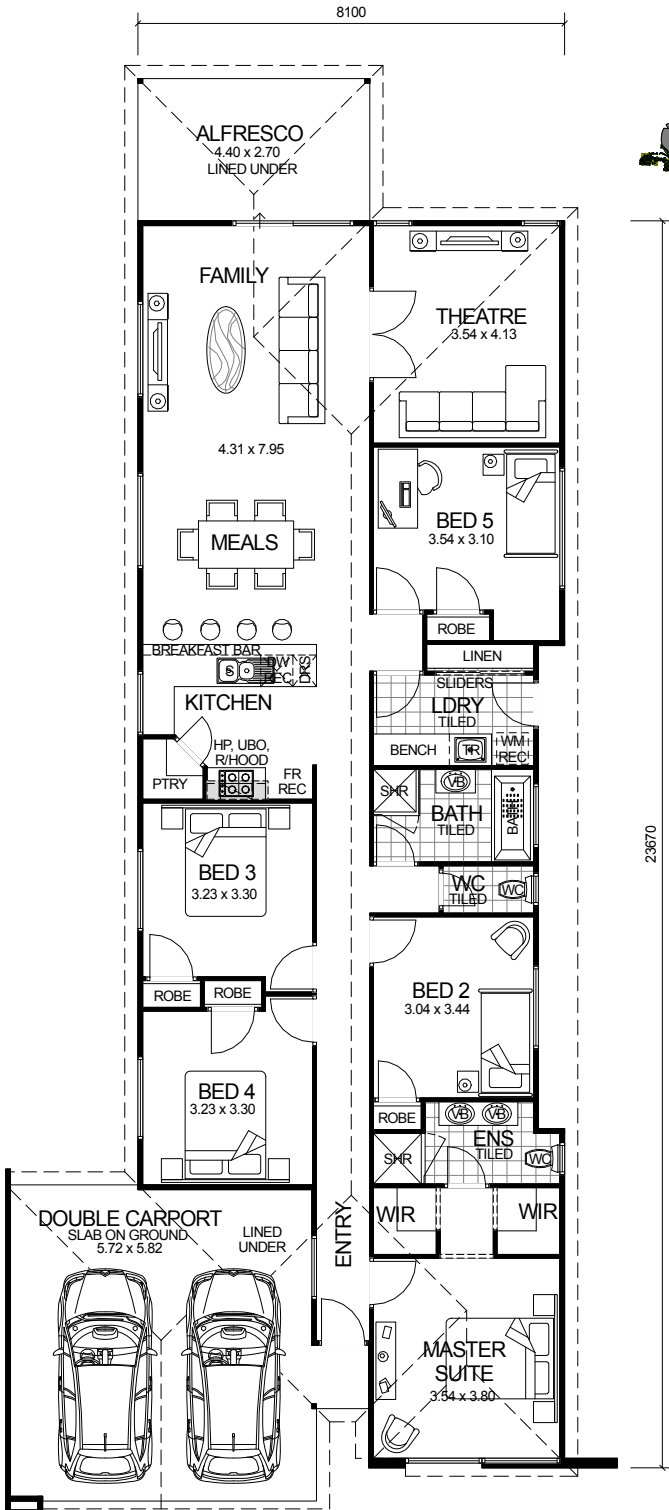
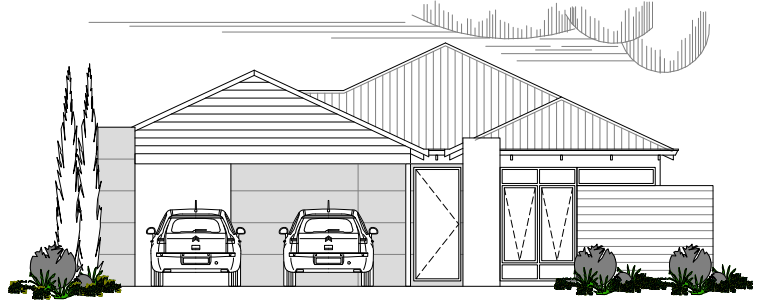


# CITY SERIES



## DESIGN FEATURES

- ARCHITECTURALLY DESIGNED WITH JAMES HARDIE SCYON CLADDING TO FRONT ELEVATION AND MODERN ROOF.
- SMART GLASS TO ALL ALUMINIUM WINDOWS AND DOORS IN CLIMATE ZONES 4 & 5.
- 2.4m CEILING HEIGHT.
- LARGE DOUBLE CARPORT JOINED TO MAIN HOME WITH LINED CEILING.
- LARGE FEATURE ALFRESCO OFF MEALS AREA TO REAR OF HOME WITH LINED CEILING.
- LARGE KITCHEN WITH WALK IN PANTRY AND STAINLESS STEEL APPLIANCES.
- DISHWASHER RECESS AND BREAKFAST BAR INCLUDED TO KITCHEN.
- HIS & HERS WALK IN ROBES.
- HIS & HERS VANITY BASINS TO ENSUITE.
- SLIDING DOORS TO LINEN PRESS IN LAUNDRY.

**NARROW BLOCK  
COMPATIBLE**

**OVERALL SIZE:**  
Width 11.61m  
Length 27.26m

AREA	
HOUSE:	166.87m <sup>2</sup>
ALFRESCO:	11.88m <sup>2</sup>
CARPOR:	36.23m <sup>2</sup>
<b>TOTAL:</b>	<b>214.98m<sup>2</sup></b>

5 BEDROOM x 2 BATHROOM

## "THE UNIVERSE"

TOTAL HOME FRAMES © COPYRIGHT