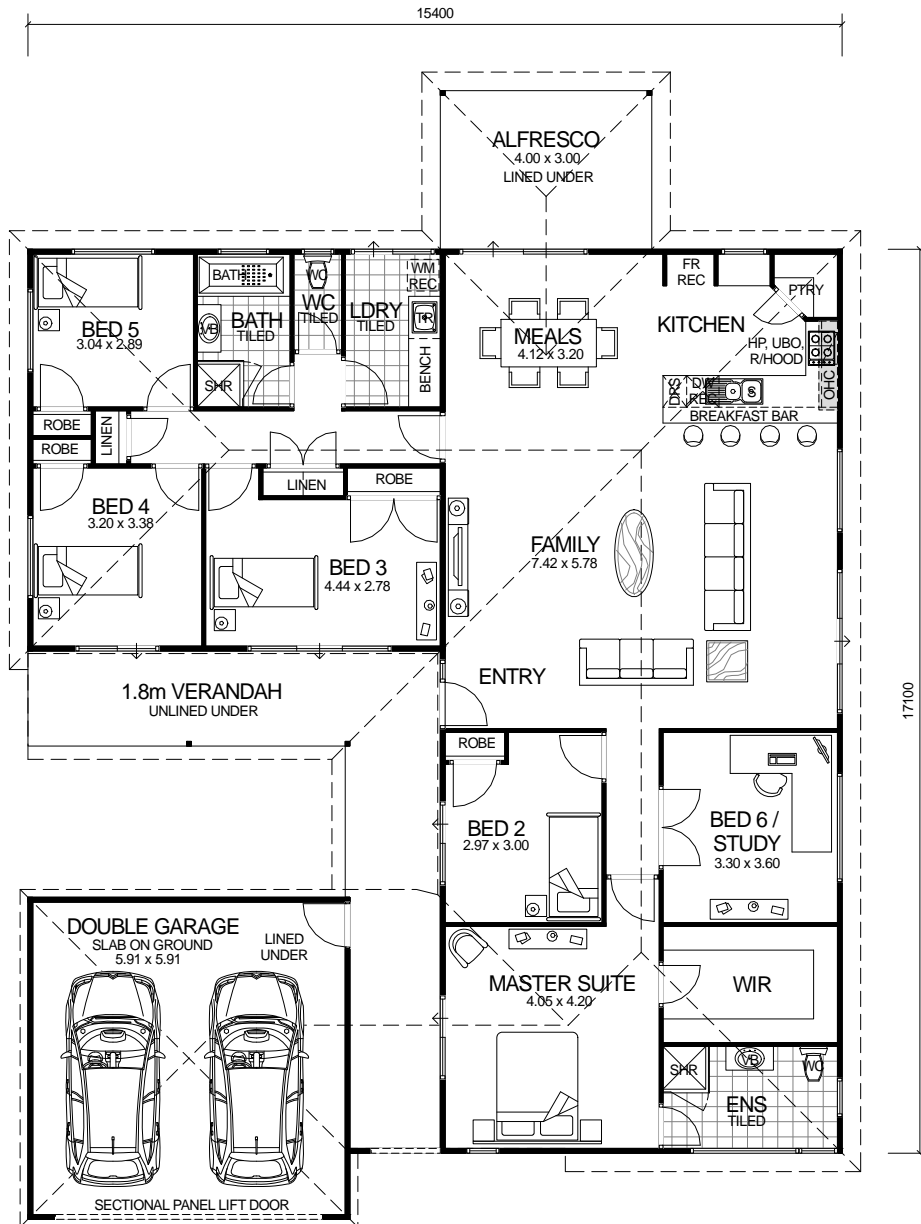


CITY SERIES



DESIGN FEATURES

- ARCHITECTURALLY DESIGNED WITH JAMES HARDIE SCYON CLADDING TO FRONT ELEVATION AND MODERN ROOF.
- SMART GLASS TO ALL ALUMINIUM WINDOWS AND DOORS IN CLIMATE ZONES 4 & 5.
- 2.4m CEILING HEIGHT.
- LARGE DOUBLE GARAGE JOINED TO MAIN HOME WITH LINED CEILING AND MODERN LOOK DOUBLE SECTIONAL DOOR.
- LARGE FEATURE ALFRESCO OFF MEALS AREA TO REAR OF HOME WITH LINED CEILING.
- LARGE KITCHEN WITH WALK IN PANTRY AND STAINLESS STEEL APPLIANCES
- DISHWASHER RECESS AND BREAKFAST BAR INCLUDED TO KITCHEN.

6 BEDROOM x 2 BATHROOM

"THE URBAN LIFESTYLE"

TOTAL HOME FRAMES © COPYRIGHT

OVERALL SIZE:
Width 15.40m
Length 21.35m

AREA

HOUSE:	189.24m ²
VERANDAH:	27.46m ²
ALFRESCO:	12.00m ²
GARAGE:	37.09m ²
TOTAL:	265.79m²