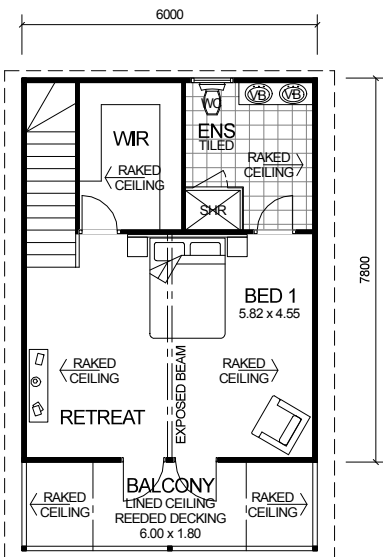
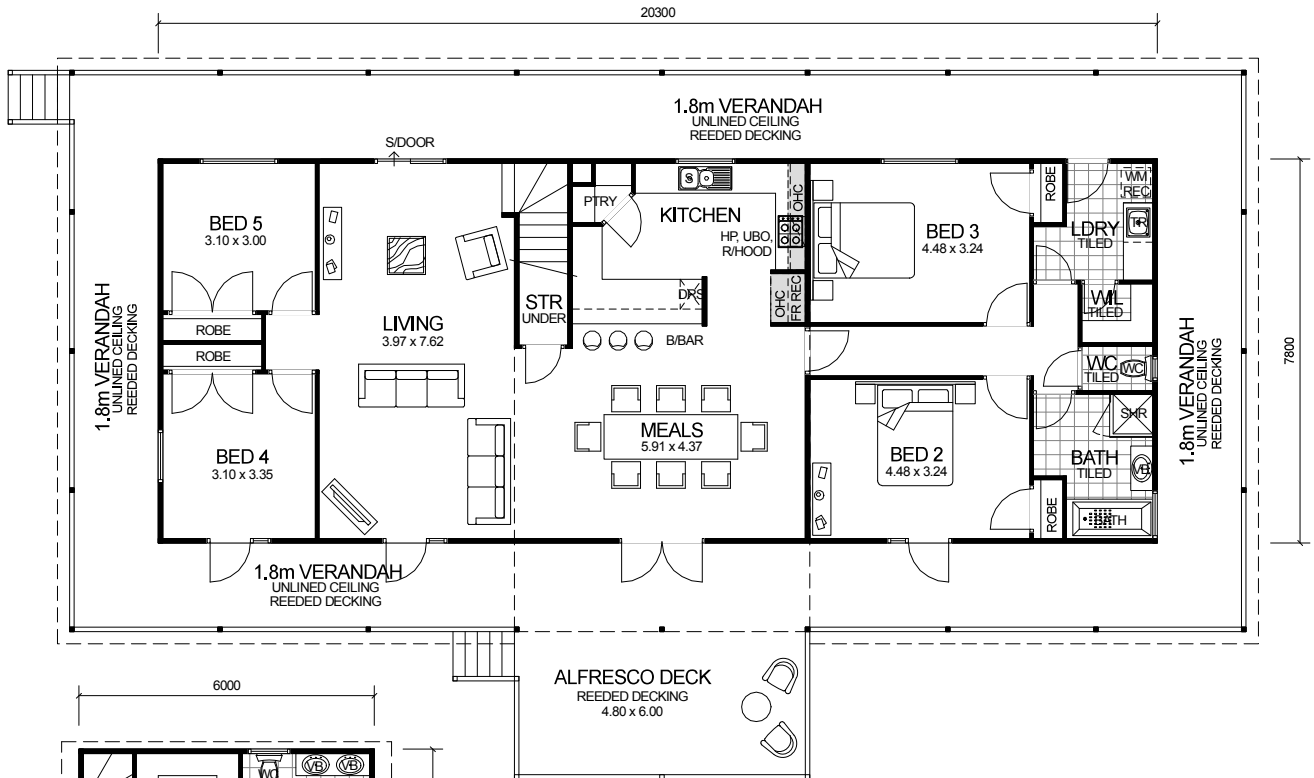


LOFT SERIES



DESIGN FEATURES

- SMART GLASS TO ALL ALUMINIUM WINDOWS AND DOORS IN CLIMATE ZONES 4 & 5.
- LARGE KITCHEN WITH BREAKFAST BAR, WALK-IN PANTRY AND STAINLESS STEEL APPLIANCES.
- LARGE BEDROOM 1 WITH RETREAT.
- LARGE WALK-IN LINEN.
- HIS AND HERS VANITY BASIN TO ENSUITE.
- 10 LITE TIMBER FRENCH DOORS WITH 5 LITE SIDE WINDOW TO FRONT ELEVATION.
- LARGE ALFRESCO DECK INCLUDED.
- HIGH RAKING CEILING TO LOFT INCLUDING LINED RAFTERS AND EXPOSED BEAM.
- HIGH RAKING LINED CEILING TO LOFT BALCONY.
- 2.4m LOWER CEILING, RAKING UPPER CEILING.

OVERALL SIZE:	
Width	23.90m
Length	14.40m

5 BEDROOM x 2 BATHROOM

AREA	
GROUND FLOOR:	158.34m ²
UPPER FLOOR:	46.80m ²
ALFRESCO DECK:	28.80m ²
VERANDAH:	103.32m ²
BALCONY	10.80m ²
TOTAL:	348.06m²

"QUEENSLANDER LOFT"

TOTAL HOME FRAMES © COPYRIGHT