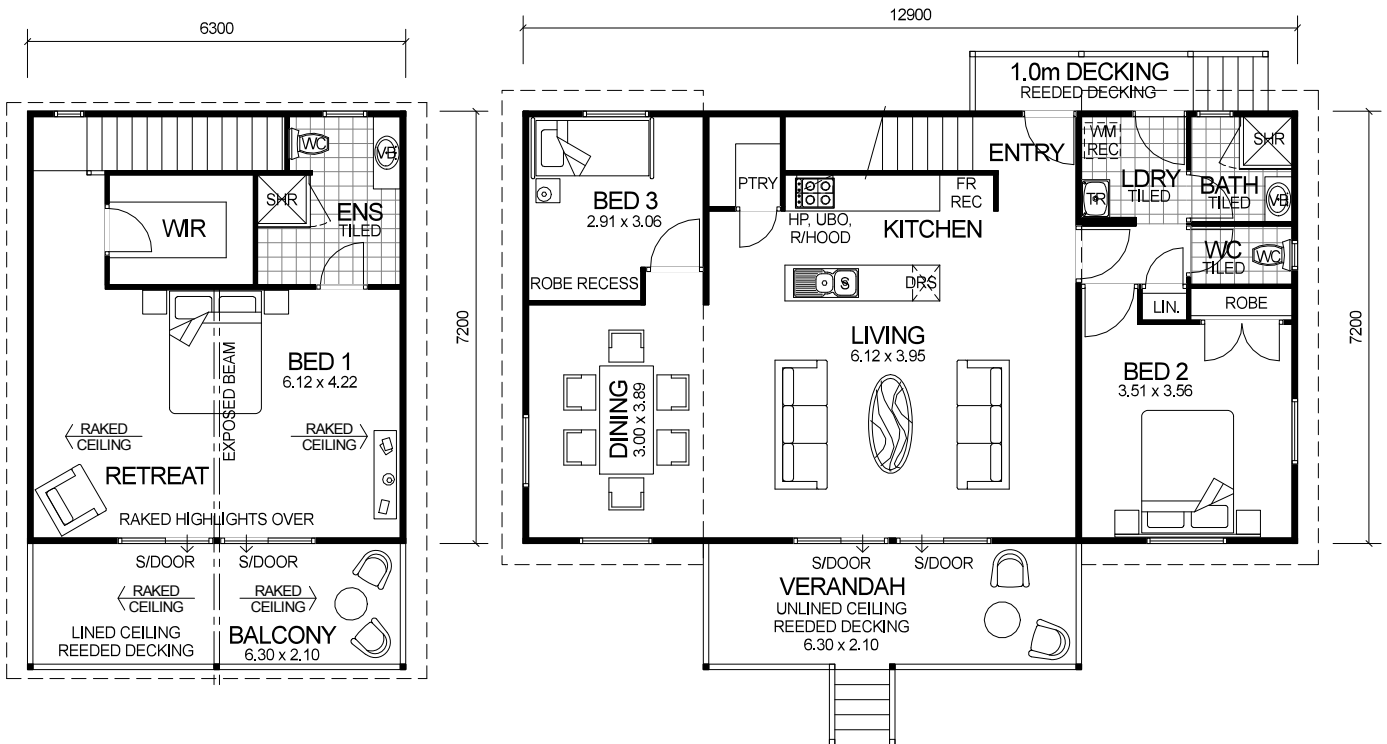


# LOFT SERIES



## DESIGN FEATURES

- SMART GLASS TO ALL ALUMINIUM WINDOWS AND DOORS IN CLIMATE ZONES 4 & 5.
- CEILING FANS INCLUDED IN ALL ROOMS IN CLIMATE ZONES 4 & 5.
- GALLEY KITCHEN WITH WALK-IN PANTRY AND STAINLESS STEEL APPLIANCES.
- LARGE BEDROOM 1 WITH RETREAT.
- GLASS HIGHLIGHT WINDOWS TO FRONT OPEN GABLE.
- FEATURE DUTCH GABLES TO ENDS OF HOME.
- HIGH RAKING CEILING TO LOFT INCLUDING LINED RAFTERS AND EXPOSED BEAM.
- HIGH RAKING LINED CEILING TO LOFT BALCONY WITH OPEN GABLE.
- 2.4m UPPER & LOWER CEILING HEIGHT.

3 BEDROOM x 2 BATHROOM

## "GETAWAY LOFT"

TOTAL HOME FRAMES © COPYRIGHT

OVERALL SIZE:  
Width 12.90m  
Length 10.30m

### AREA

GROUND FLOOR:	92.88m <sup>2</sup>
UPPER FLOOR:	45.36m <sup>2</sup>
DECKING:	3.72m <sup>2</sup>
VERANDAH:	13.23m <sup>2</sup>
BALCONY:	13.23m <sup>2</sup>
<b>TOTAL:</b>	<b>168.42m<sup>2</sup></b>