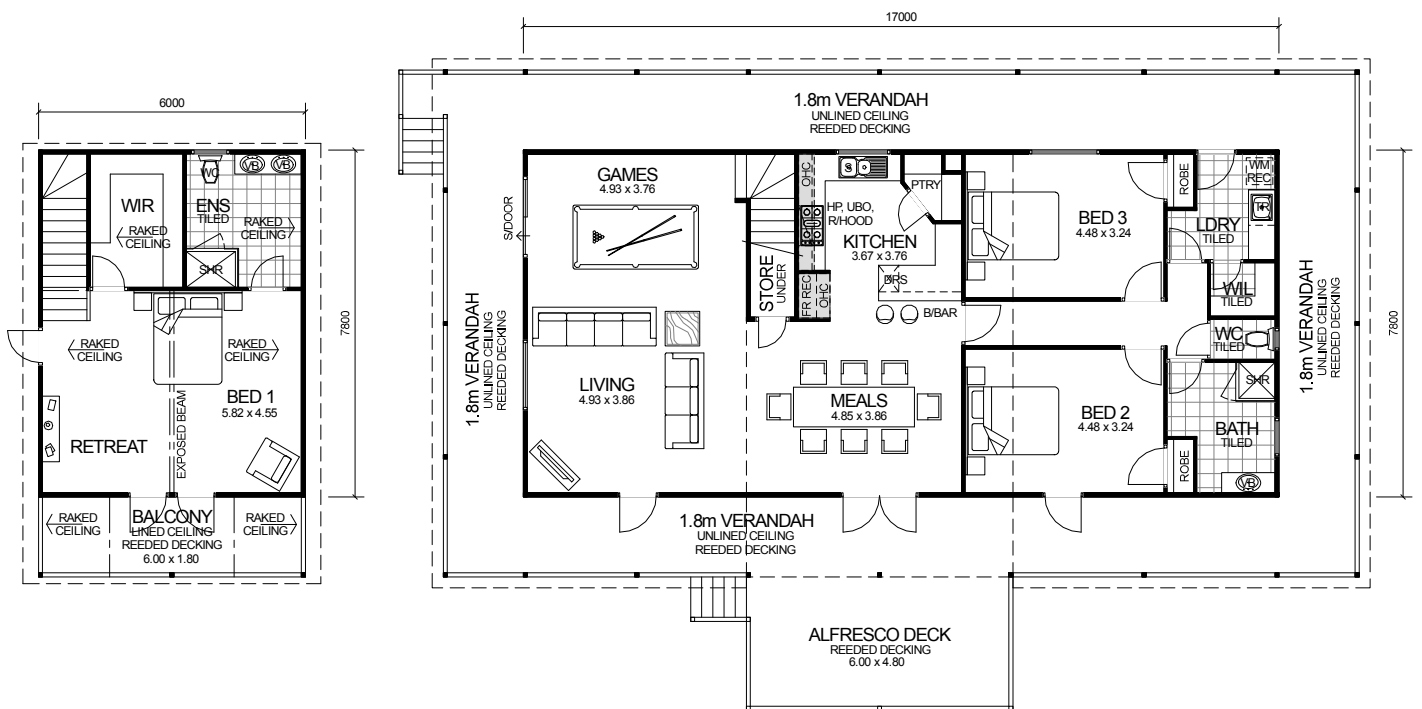


# LOFT SERIES



## DESIGN FEATURES

- SMART GLASS TO ALL ALUMINIUM WINDOWS AND DOORS IN CLIMATE ZONES 4 & 5.
- LARGE KITCHEN WITH BREAKFAST BAR, WALK-IN PANTRY AND STAINLESS STEEL APPLIANCES.
- LARGE BEDROOM 1 WITH RETREAT.
- LARGE WALK-IN LINEN.
- HIS AND HERS VANITY BASIN TO ENSUITE.
- 10 LITE TIMBER FRENCH DOORS TO FRONT ELEVATION.
- LARGE ALFRESCO DECK INCLUDED.
- HIGH RAKING CEILING TO LOFT INCLUDING LINED RAFTERS AND EXPOSED BEAM.
- HIGH RAKING LINED CEILING TO LOFT BALCONY WITH OPEN GABLE.
- 2.4m LOWER CEILING, RAKING UPPER CEILING.

3 BEDROOM x 2 BATHROOM

## "QUEENSLANDER LOFT"

TOTAL HOME FRAMES © COPYRIGHT

OVERALL SIZE:  
Width 20.60m  
Length 14.40m

### AREA

GROUND FLOOR:	132.60m <sup>2</sup>
UPPER FLOOR:	46.80m <sup>2</sup>
ALFRESCO DECK:	28.80m <sup>2</sup>
VERANDAH:	91.44m <sup>2</sup>
BALCONY	10.80m <sup>2</sup>
<b>TOTAL:</b>	<b>310.44m<sup>2</sup></b>