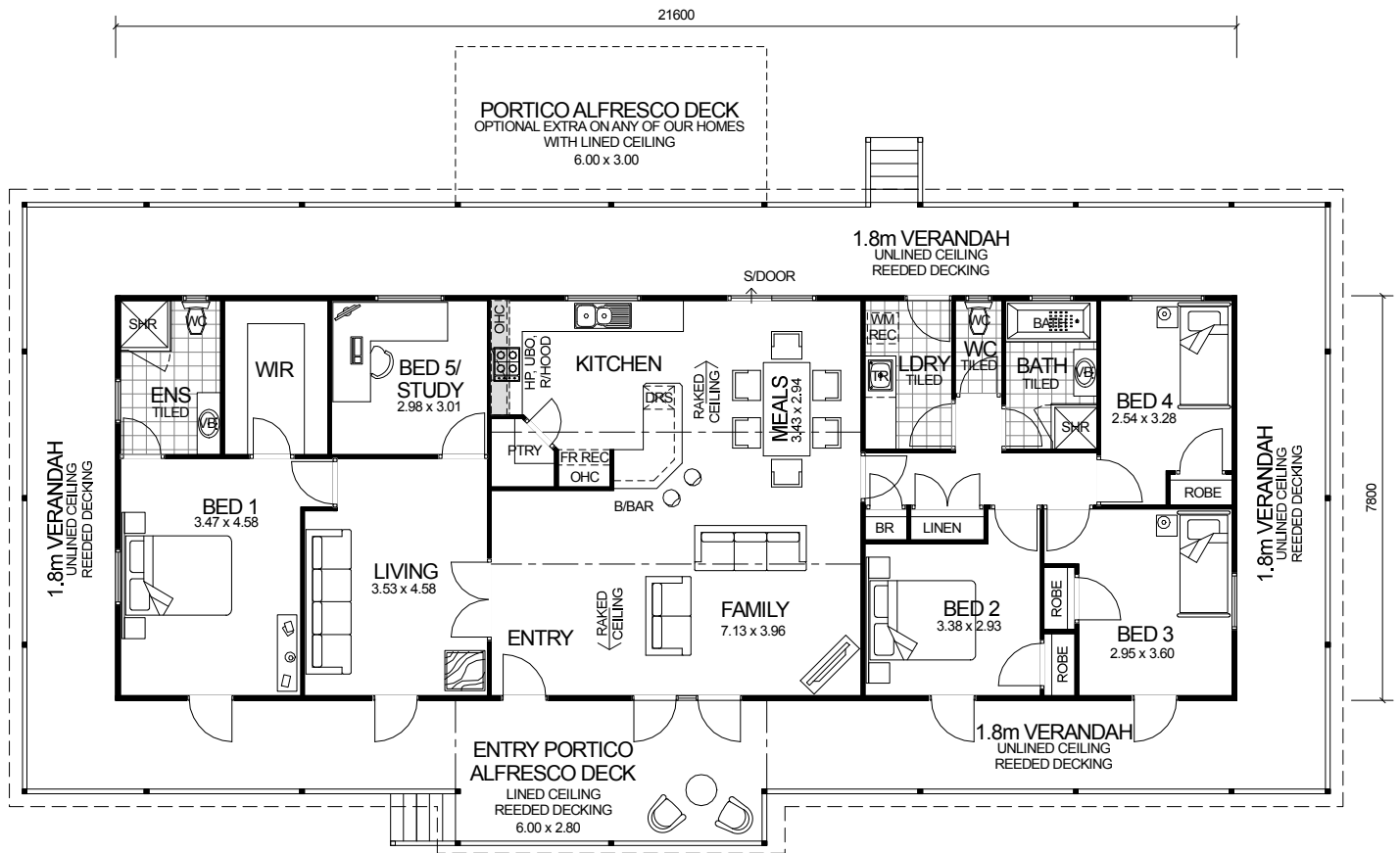
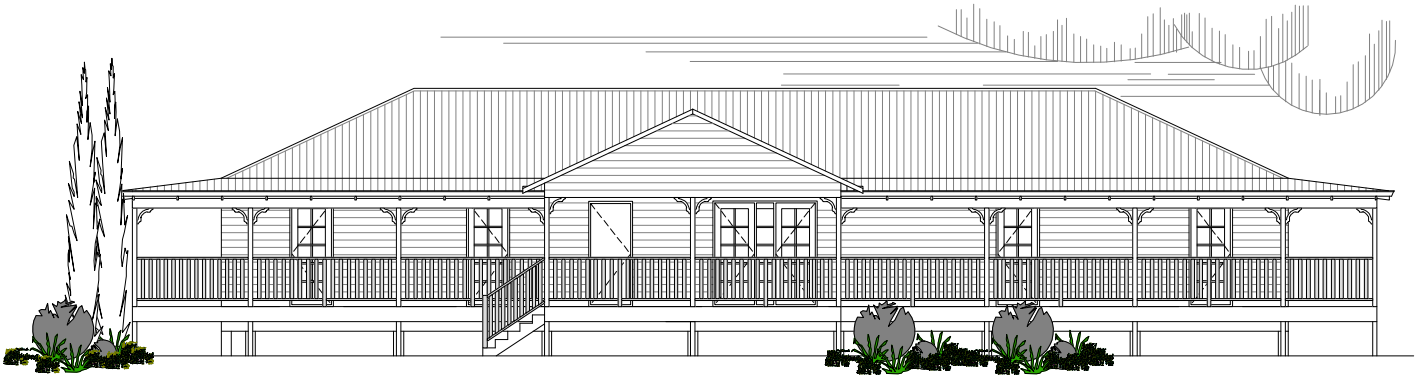


QUEENSLANDER SERIES



DESIGN FEATURES

- SMART GLASS TO ALL ALUMINIUM WINDOWS AND DOORS IN CLIMATE ZONES 4 & 5.
- LARGE KITCHEN WITH BREAKFAST BAR, WALK-IN PANTRY AND STAINLESS STEEL APPLIANCES.
- 10 LITE TIMBER FRENCH DOORS TO FRONT ELEVATION WITH FEATURE ENTRY DOOR.
- FEATURE LINED ENTRY PORTICO ALFRESCO DECK INCLUDED.
- HIGH RAKING CEILING TO KITCHEN, MEALS AND FAMILY.
- 2.4m CEILING HEIGHT.

5 BEDROOM x 2 BATHROOM

"QUEENSLANDER"

TOTAL HOME FRAMES © COPYRIGHT

OVERALL SIZE:
Width 25.20m
Length 12.40m

AREA

HOUSE:	168.48m ²
PORTICO ALFRESCO:	16.80m ²
VERANDAH:	108.00m ²
TOTAL:	293.28m ²
OPTIONAL ALFRESCO:	18.0m ²