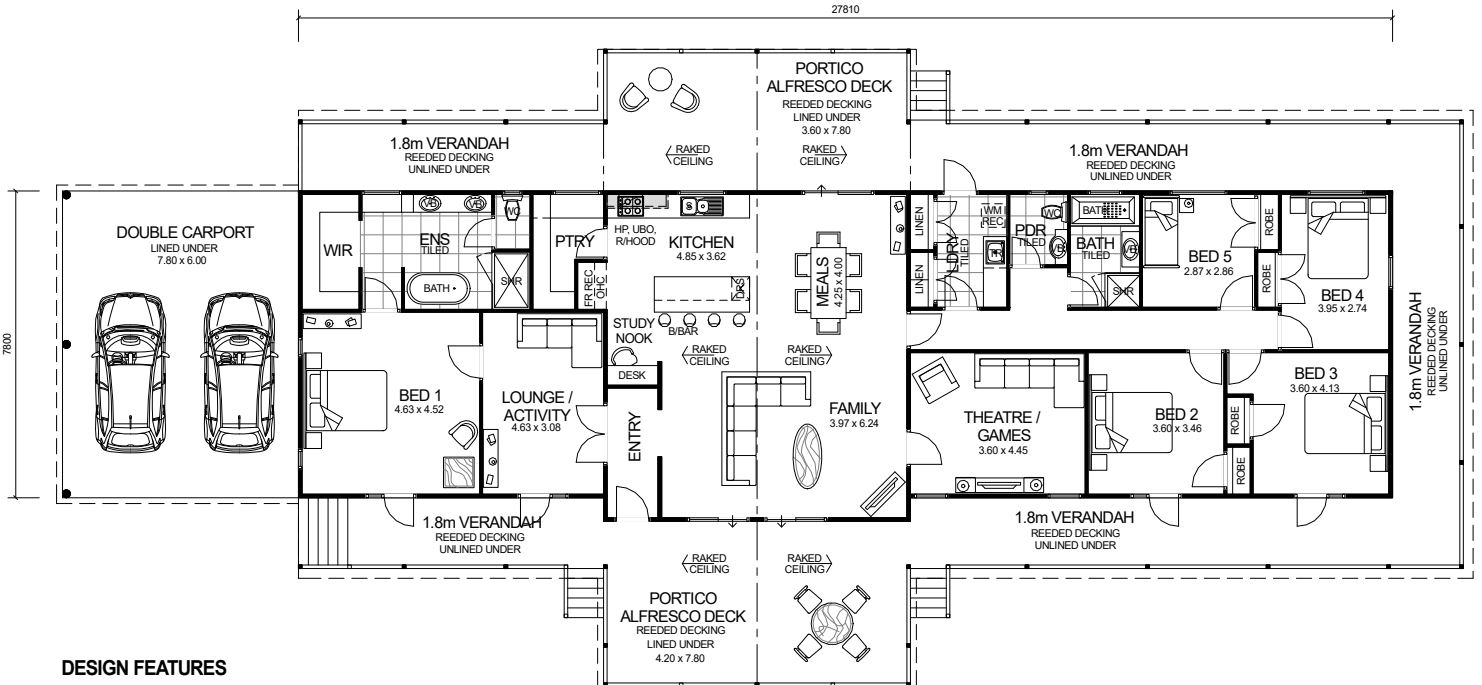


# QUEENSLANDER SERIES



## DESIGN FEATURES

- SMART GLASS INCLUDED TO ALL ALUMINIUM WINDOWS AND DOORS IN CLIMATE ZONES 4 & 5.
- ARCHITECTURALLY DESIGNED FRONT ELEVATION WITH FEATURE 30 DEGREE ROOF PITCH TO CENTRE RIDGE LINE.
- GLASS HIGHLIGHT WINDOWS TO FRONT OPEN GABLE.
- LARGE KITCHEN WITH BREAKFAST BAR, WALK-IN PANTRY AND STAINLESS STEEL APPLIANCES.
- STUDY NOOK.
- HIS AND HERS VANITY BASINS WITH LARGE SHOWER & FREE STANDING BATH TO ENSUITE.
- SEPARATE POWDER ROOM WITH VANITY BASIN.
- ALUMINIUM BENCHMARK 4 LITE FRENCH DOORS TO BEDROOMS & ACTIVITY TO FRONT ELEVATION.
- FEATURE LINED FRONT & REAR PORTICO ALFRESCO DECKS INCLUDED.
- DOUBLE CARPORT INCLUDED.
- HIGH RAKING CEILING TO KITCHEN, FAMILY AND MEALS.
- HIGH RAKING LINED CEILING TO FRONT & REAR PORTICO ALFRESCO DECKS INCLUDED.
- ALFRESCO DECKS INCLUDED.
- 2.7m CEILING HEIGHT.

**OVERALL SIZE:**  
Width 16.20m  
Length 35.60m

**5 BEDROOM x 2 BATHROOM  
PLUS THEATRE/GAMES & ACTIVITY**

## "COASTAL RETREAT 5x2.5"

TOTAL HOME FRAMES © COPYRIGHT

### AREA

HOUSE:	221.60m <sup>2</sup>
VERANDAH:	92.56m <sup>2</sup>
ALFRESCO (FRONT):	32.76m <sup>2</sup>
ALFRESCO (REAR):	28.08m <sup>2</sup>
CARPORT:	46.80m <sup>2</sup>
<b>TOTAL:</b>	<b>421.80m<sup>2</sup></b>