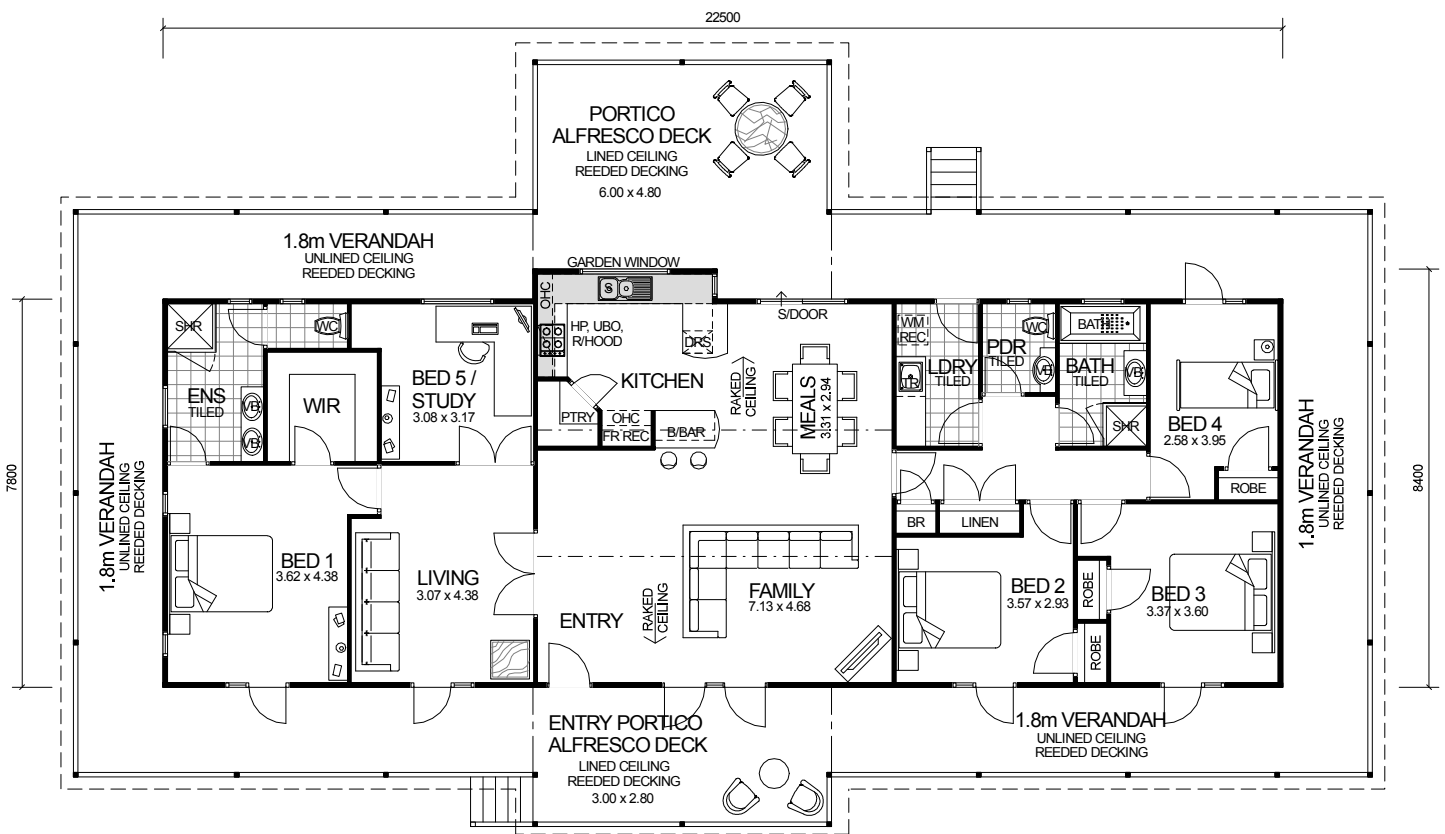
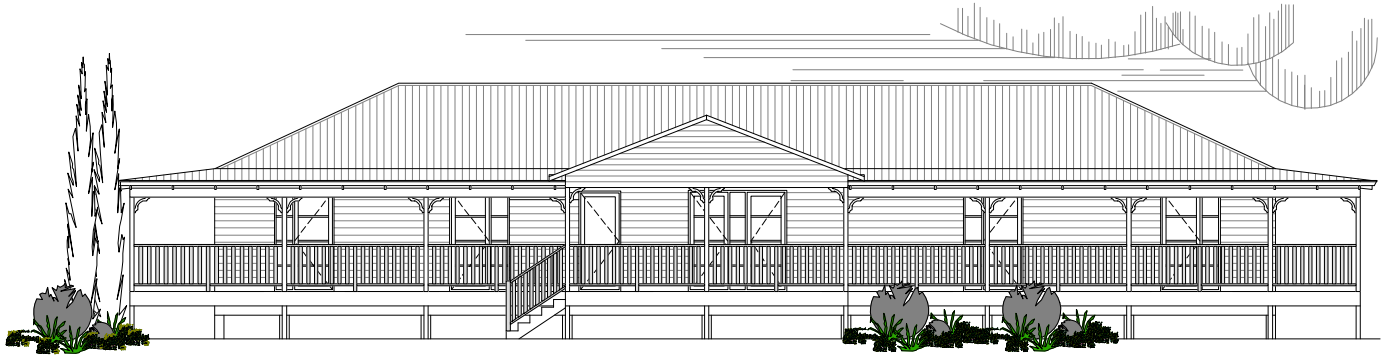


QUEENSLANDER SERIES



DESIGN FEATURES

- SMART GLASS TO ALL ALUMINIUM WINDOWS AND DOORS IN CLIMATE ZONES 4 & 5.
- CEILING FANS THROUGHOUT HOME IN CLIMATE ZONES 4 & 5.
- LARGE KITCHEN WITH BREAKFAST BAR, WALK-IN PANTRY AND STAINLESS STEEL APPLIANCES.
- SEPARATE POWDER ROOM WITH VANITY BASIN.
- HIS & HERS VANITY BASINS TO ENSUITE.
- ALUMINIUM BENCHMARK 4 LITE FRENCH DOORS TO FRONT ELEVATION.
- REAR LINED PORTICO ALFRESCO DECK INCLUDED.
- FEATURE ENTRY LINED PORTICO ALFRESCO DECK INCLUDED.
- HIGH RAKING CEILING TO KITCHEN, MEALS, AND FAMILY.
- 2.4m CEILING HEIGHT.

5 BEDROOM x 2.5 BATHROOM

"LIFESTYLE"

TOTAL HOME FRAMES © COPYRIGHT

OVERALL SIZE:
Width 26.10m
Length 15.40m

AREA

HOUSE:	177.72m ²
VERANDAH:	100.44m ²
ENTRY PORTICO:	16.80m ²
ALFRESCO PORTICO:	26.58m ²
TOTAL:	321.54m²