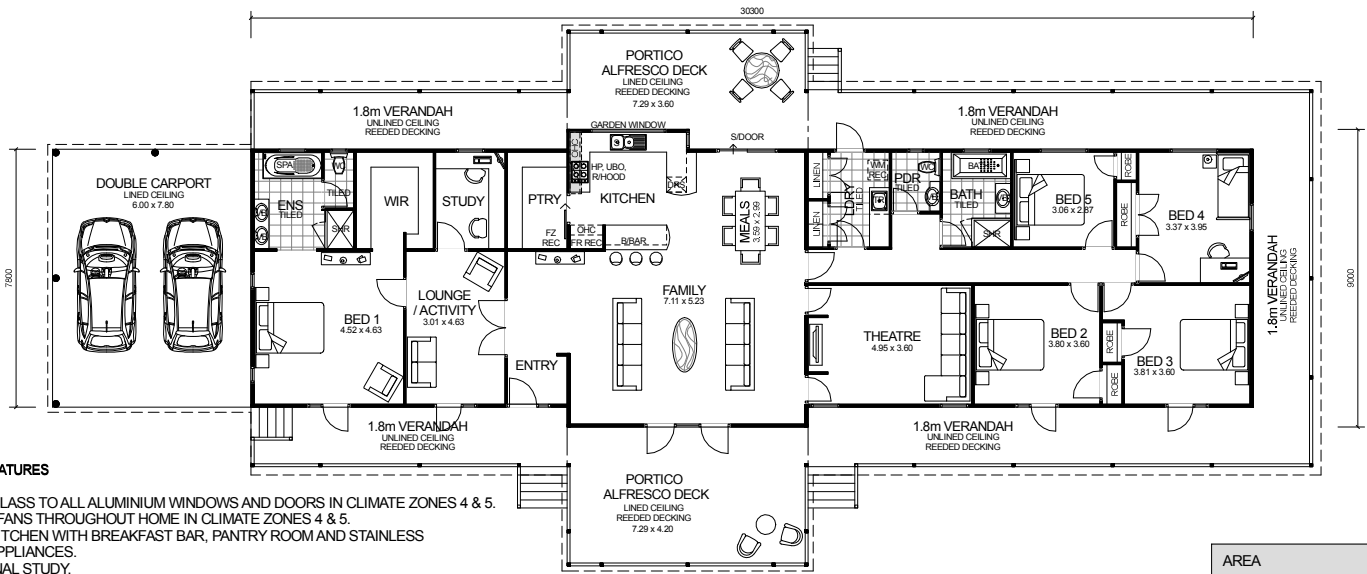


QUEENSLANDER SERIES



DESIGN FEATURES

- SMART GLASS TO ALL ALUMINIUM WINDOWS AND DOORS IN CLIMATE ZONES 4 & 5.
- CEILING FANS THROUGHOUT HOME IN CLIMATE ZONES 4 & 5.
- LARGE KITCHEN WITH BREAKFAST BAR, PANTRY ROOM AND STAINLESS STEEL APPLIANCES.
- ADDITIONAL STUDY.
- LARGE SHOWER RECESS WITH HIS & HERS VANITY BASINS TO ENSUITE.
- SPA BATH TO ENSUITE INCLUDED.
- SEPARATE POWDER ROOM WITH VANITY BASIN.
- ALUMINIUM BENCHMARK 4 LITE FRENCH DOORS TO FRONT ELEVATION.
- DOUBLE CARPORT INCLUDED.
- FEATURE LINED FRONT & REAR PORTICO ALFRESCO DECKS INCLUDED.
- ADDITIONAL FEATURE LATTICE TRIM TO FRONT & REAR PORTICOS.
- THREE FEATURE DUTCH GABLES TO FRONT ELEVATION.
- 2.7m CEILING HEIGHT.

5 BEDROOM x 2.5 BATHROOM
PLUS ACTIVITY, STUDY & THEATRE

"MANOR"

TOTAL HOME FRAMES © COPYRIGHT

OVERALL SIZE:
Width 38.10m
Length 16.20m

AREA

HOUSE:	242.93m ²
VERANDAH:	103.36m ²
PORTICO (FRONT):	30.62m ²
PORTICO (REAR):	24.02m ²
DOUBLE CARPORT:	46.80m ²
TOTAL:	447.73m²

DISCLAIMER: This artist's impression, the home design, and the final specification can change without notice. Ask your representative.