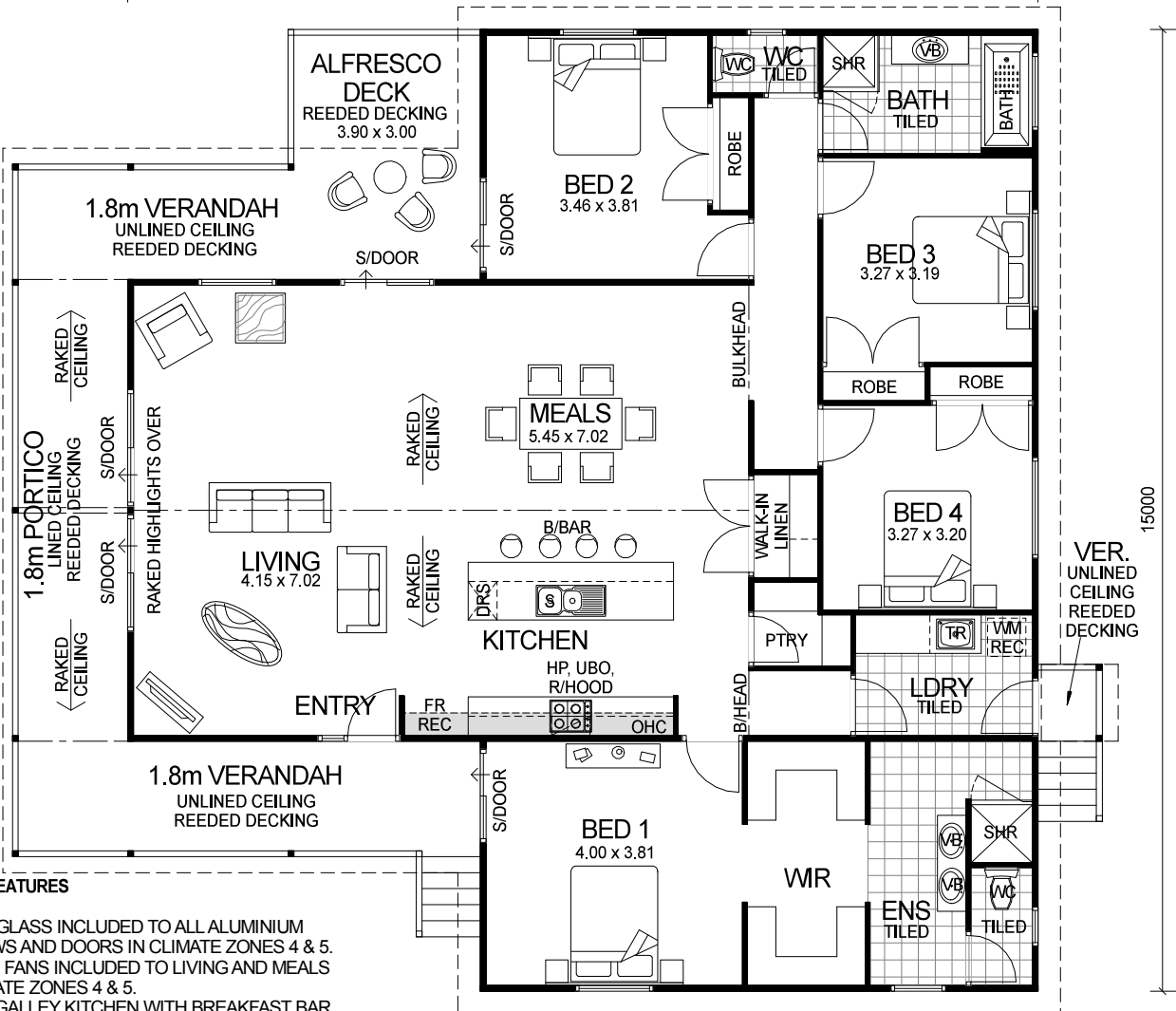


# ROOFLINE SERIES



14200



## DESIGN FEATURES

- SMART GLASS INCLUDED TO ALL ALUMINIUM WINDOWS AND DOORS IN CLIMATE ZONES 4 & 5.
- CEILING FANS INCLUDED TO LIVING AND MEALS IN CLIMATE ZONES 4 & 5.
- LARGE GALLEY KITCHEN WITH BREAKFAST BAR, WALK-IN PANTRY AND STAINLESS STEEL APPLIANCES.
- LARGE WALK-IN LINEN.
- LARGE SHOWER RECESS WITH HIS & HERS VANITY BASINS TO ENSUITE.
- HIS AND HERS WALK-IN ROBES.
- GLASS HIGHLIGHT WINDOWS TO FRONT OPEN GABLE.
- LARGE ALFRESCO DECK INCLUDED.
- HIGH RAKING CEILING TO LIVING, KITCHEN AND MEALS.
- HIGH RAKING LINED CEILING TO PORTICO WITH OPEN GABLE.
- 2.7m CEILING HEIGHT.

OVERALL SIZE:  
Width 15.00m  
Length 16.00m

4 BEDROOM x 2 BATHROOM

## "ROOFLINE" VISION

TOTAL HOME FRAMES © COPYRIGHT

### AREA

|                   |                            |
|-------------------|----------------------------|
| HOUSE:            | 170.10m <sup>2</sup>       |
| PORTICO:          | 12.96m <sup>2</sup>        |
| VERANDAH (FRONT): | 20.88m <sup>2</sup>        |
| VERANDAH (REAR):  | 1.20m <sup>2</sup>         |
| ALFRESCO DECK:    | 11.70m <sup>2</sup>        |
| <b>TOTAL:</b>     | <b>216.84m<sup>2</sup></b> |